

10-4169: Monoclonal Antibody to BST 2 (Clone: ABM52D8)

Clonality :	Monoclonal
Clone Name :	ABM52D8
Application :	FACS, WB
Reactivity :	Rat, Mouse, Human
Gene :	BST2
Gene ID :	684
Uniprot ID :	Q10589
Format :	Purified
Alternative Name :	Bone marrow stromal antigen 2, HM1.24 antigen, Tetherin, CD317
Isotype :	Mouse IgG1, kappa
Immunogen Information :	Full length recombinant protein of BST 2 was used as the immunogen for this antibody.

Description

BST2 (Bone Marrow Stromal Antigen 2), a type II transmembrane protein also known as HM1.24/CD317, has been identified to be overexpressed in a variety of cell lines from different cancer types, including multiple myeloma, breast, lung, and kidney cancers. BST2 was discovered as a marker of differentiated B cells and was later rediscovered as a potent antiviral restriction factor with the ability to tether enveloped viruses to the cell membrane of infected cells via its GPI anchor as well as to potentially inhibit virus replication in cultured cells and in vivo. It also acts as an innate immune sensor of HIV-1 that elicits an inflammatory response upon exposure. BST2 mediates host immune response by activating NF- κ B through interaction with TAK1 (Transforming Growth Factor Beta-Activated Kinase 1) and TNF receptor associated factors (TRAFs) 2 and 6. In addition, BST2 induces ADCC (antibody-dependent cell cytotoxicity) against the envelope protein of HIV. BST2 was expressed constitutively on the cell surface of both CD3⁻ and CD3⁺ thymocytes ex vivo.

Product Info

Amount :	25 μ g / 100 μ g
Purification :	Protein G Chromatography
Content :	25 μ g in 50 μ l / 100 μ g in 200 μ l PBS containing 0.05% BSA and 0.05% sodium azide. Sodium azide is highly toxic.
Storage condition :	Store the antibody at 4°C, stable for 6 months. For long-term storage, store at -20°C. Avoid repeated freeze and thaw cycles.

Application Note

WB: 2-4 μ g/ml, FACS: 0.5-1 μ g/ 10^6

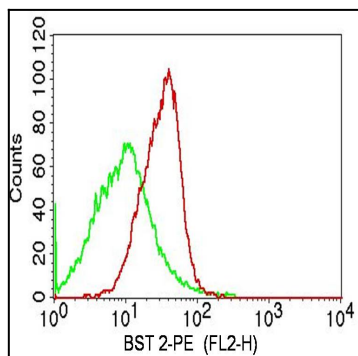


Fig-1: Cell surface flow analysis of BST2 in PBMCs (lymphocytes gated) using 0.5 $\mu\text{g}/10^6$ cells of antibody (Clone: ABM52D8). Green represents isotype control; red represents anti-BST2 antibody. Goat anti-mouse PE conjugate was used as secondary antibody. (Cells were incubated with primary antibody for 45 min. then washed twice with PBS by centrifuging at 1100 rpm for 5 min, followed by 30 min incubation with conjugated secondary antibody. Data acquisition was done after washing twice with PBS as mentioned above).

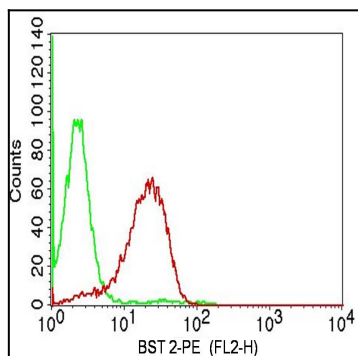


Fig-2: Cell surface flow analysis of BST2 on Molt4 cells using 0.5 $\mu\text{g}/10^6$ cells of antibody (Clone: ABM52D8). Green represents isotype control; red represents anti-BST2 antibody. Goat anti-mouse PE conjugate was used as secondary antibody. (Cells were incubated with primary antibody for 45 min. then washed twice with PBS by centrifuging at 1100 rpm for 5 min, followed by 30 min incubation with conjugated secondary antibody. Data acquisition was done after washing twice with PBS as mentioned above).

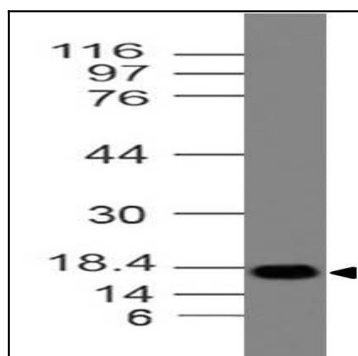


Fig-3: Western blot analysis of BST 2. Anti-BST 2 antibody (Clone: ABM52D8) was used at 2 $\mu\text{g}/\text{ml}$ on Ramos lysate.

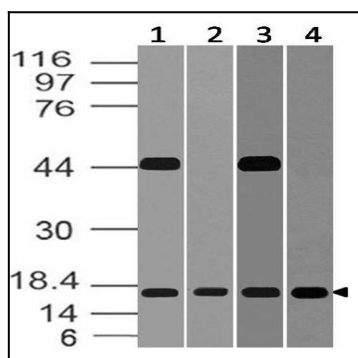


Fig-4: Western blot analysis of BST 2. Anti-BST 2 antibody (Clone: ABM52D8) was used at 2 $\mu\text{g}/\text{ml}$ on (1) m Lung, (2) r Lung, (3) m Kidney and (4) r Kidney lysates.