

10-7600: Monoclonal Antibody to FSH Receptor (Clone: ABM5D29)

Clonality :	Monoclonal
Clone Name :	ABM5D29
Application :	FACS, WB
Reactivity :	Human
Gene :	FSHR
Gene ID :	2492
Uniprot ID :	P23945
Format :	Purified
Alternative Name :	Follicle-stimulating hormone receptor, FSH-R, Follicle-stimulating hormone receptor
Isotype :	Mouse IgG1, kappa
Immunogen Information :	A partial length recombinant protein (a.a 03-200) of FSH Receptor was used as the immunogen for this antibody.

Description

FSH receptor is a member of the G protein coupled receptor family consisting of 9 introns and 10 exons and a promoter region and is located on chromosome 2p21. FSH receptor was shown to be expressed selectively on the luminal surface of tumor blood vessels. A general characteristic of the blood vessels that express the endothelial FSH receptor is that they are located at the periphery of the tumors. Many studies showed that FSH receptor polymorphisms at positions 307 and 680 may be even more relevant for clinical practice for the reasons of regulating the ovarian reaction to hormone, controlling ovarian hyperstimulation, changing the menstrual cycle, and causing POF (Premature Ovarian Failure) and PCOS (Polycystic Ovary Syndrome).

Product Info

Amount :	25 µg / 100 µg
Purification :	Protein G Chromatography
Content :	25 µg in 50 µl/100 µg in 200 µl PBS containing 0.05% BSA and 0.05% sodium azide. Sodium azide is highly toxic.
Storage condition :	Store the antibody at 4°C, stable for 6 months. For long-term storage, store at -20°C. Avoid repeated freeze and thaw cycles.

Application Note

WB: 2-4 µg/ml, FACS: 0.5-1 µg/10⁶

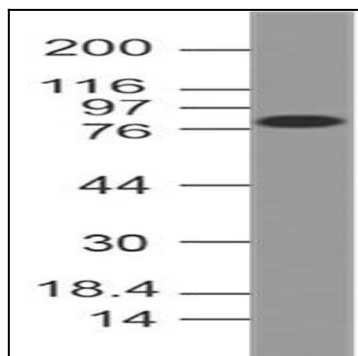


Fig-1: Western blot analysis of FSH Receptor. Anti-FSH Receptor antibody (Clone: ABM5D29) was used at 2 µg/ml on HeLa lysate.

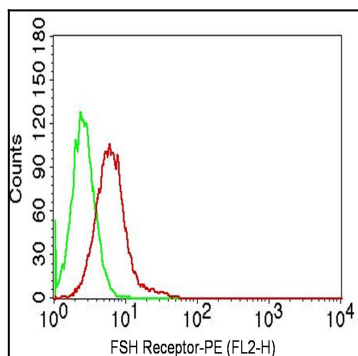


Fig-2: Intracellular flow analysis of FSH receptor antibody on A431 cells using 0.5 µg/10⁶ cells (Clone: ABM5D29). Green represents isotype control; red represents anti-FSH receptor antibody. Goat anti-mouse PE conjugate was used as secondary antibody. (Cells were fixed with 4% paraformaldehyde for 10 min and washed with PBS by centrifuging at 1100 for 5 min followed by permeabilization for 20 min and washed again as mentioned above. Then cell were incubated with primary antibody for 45 min. and after washing the cells twice in PBS, incubated with conjugated secondary antibody for 30 min. Data acquisition was done after washing twice with PBS as mentioned above).

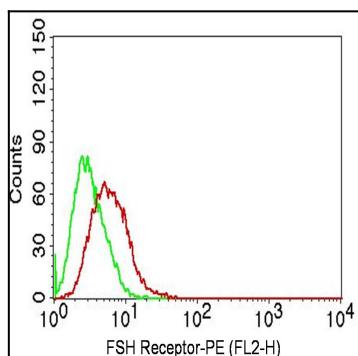


Fig-3: Intracellular flow analysis of FSH receptor antibody on HeLa cells using 0.5 µg/10⁶ cells (Clone: ABM5D29). Green represents isotype control; red represents anti-FSH receptor antibody. Goat anti-mouse PE conjugate was used as secondary. (Cells were fixed with 4% paraformaldehyde for 10 min and washed with PBS by centrifuging at 1100 for 5 min followed by permeabilization for 20 min and washed again as mentioned above. Then cell were incubated with primary antibody for 45 min. and after washing the cells twice in PBS, incubated with conjugated secondary antibody for 30 min. Data acquisition was done after washing twice with PBS as mentioned above).