

10-7603: Monoclonal Antibody to PAX8 (Clone:ABM5F33)

Clonality :	Monoclonal
Clone Name :	ABM5F33
Application :	FACS, WB
Reactivity :	Human
Gene :	PAX8
Gene ID :	7849
Uniprot ID :	Q06710
Format :	Purified
Alternative Name :	Paired box protein Pax-8
Isotype :	Mouse IgG2b, kappa
Immunogen Information :	A partial length recombinant protein (a.a 28-261) of PAX8 was used as the immunogen for this antibody.

Product Info

Amount :	25 µg / 100 µg
Purification :	Protein G Chromatography
Content :	25 µg in 50 µl/100 µg in 200 µl PBS containing 0.05% BSA and 0.05% sodium azide. Sodium azide is highly toxic.
Storage condition :	Store the antibody at 4°C, stable for 6 months. For long-term storage, store at -20°C. Avoid repeated freeze and thaw cycles.

Application Note

WB: 2-4 µg/ml, FACS: 0.5-1 µg/10⁶

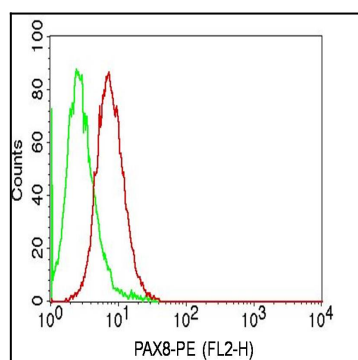


Figure-1: Intracellular flow analysis of Pax8 in Raji cells using 0.5 µg/10⁶ cells of antibody (Clone: ABM5F33). Green represents isotype control; red represents anti-Pax8 antibody. Goat anti-mouse PE conjugate was used as secondary antibody. (Cells were fixed with 4% paraformaldehyde for 10 min and washed with PBS by centrifuging at 1100 for 5 min followed by permeabilization for 20 min and washed again as mentioned above. Then cell were incubated with primary antibody for 45 min. and after washing the cells twice in PBS, incubated with conjugated secondary antibody for 30 min. Data acquisition was done after washing twice with PBS as mentioned above).

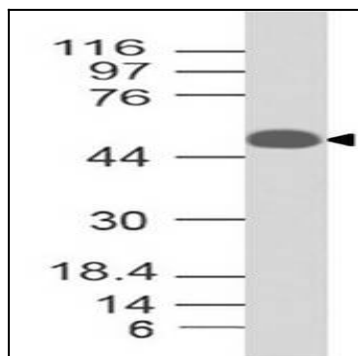


Figure-2: Western blot analysis of PAX8. Anti-PAX8 antibody (Clone: ABM5F33) was used at 2 µg/ml on Ramos lysate.