

11-7567: Polyclonal Antibody to CLIP

Clonality :	Polyclonal
Application :	WB
Reactivity :	Human
Gene :	POMC
Gene ID :	5443
Uniprot ID :	P01189
Format :	Purified
Alternative Name :	POMC
Isotype :	Rabbit IgG
Immunogen Information :	A synthetic peptide corresponding to amino acids 156-176 (CLIP region) of h POMC was used as an immunogen for this antibody.

Product Info

Amount :	25 µg / 100 µg
Purification :	Protein A Chromatography
Content :	25 µg in 50 µl/100 µg in 200 µl PBS containing 0.05% BSA and 0.05% sodium azide. Sodium azide is highly toxic.
Storage condition :	Store the antibody at 4°C, stable for 6 months. For long-term storage, store at -20°C. Avoid repeated freeze and thaw cycles.

Application Note

Western blot analysis: 1-2 µg/ml

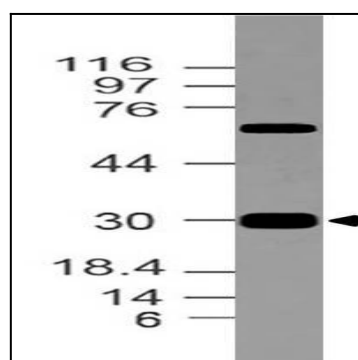


Fig-1: Western blot analysis of CLIP. Anti-CLIP antibody (11-7567) was used at 1 µg/ml on h SKM lysate.