

11-7569: Polyclonal Antibody to NSE gamma

Clonality :	Polyclonal
Application :	WB
Reactivity :	Human
Gene :	ENO2
Gene ID :	2026
Uniprot ID :	P09104
Format :	Purified
Alternative Name :	ENO2, 2-phospho-D-glycerate hydro-lyase, Enolase 2, Neural enolase
Isotype :	Rabbit IgG
Immunogen Information :	A partial length recombinant protein from C terminal portion of h NSE Gamma was used as the immunogen for this antibody.

Product Info

Amount :	25 µg / 100 µg
Purification :	Protein A Chromatography
Content :	25 µg in 50 µl/100 µg in 200 µl PBS containing 0.05% BSA and 0.05% sodium azide. Sodium azide is highly toxic.
Storage condition :	Store the antibody at 4°C, stable for 6 months. For long-term storage, store at -20°C. Avoid repeated freeze and thaw cycles.

Application Note

Western blot analysis: 0.5-1 µg/ml

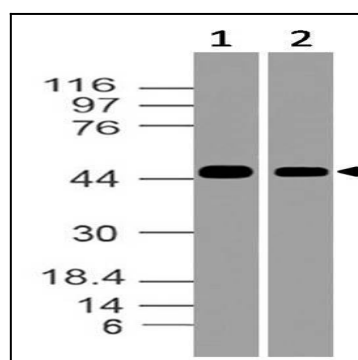


Fig-1: Western blot analysis of NSE gamma. Anti-NSE gamma antibody (11-7569) was used at 0.5 µg/ml on (1) h Brain and (2) HepG2 lysates.