

## 31-1376: Goat Anti-Mouse Lambda-FITC

**Application :** IHC, IHC-P, IP, ELISA, FACS, WB, IHC-Fr

**Conjugate :** FITC

**Isotype :** Goat IgG

### Product Info

**Amount :** 1.0 mg

**Purification :** Affinity chromatography on mouse lambda light chains covalently linked to agarose

**Content :** 1.0 mg/ml, 1.0 ml, Supplied in PBS/Sodium azide

**Storage condition :** Store at 2-8°C

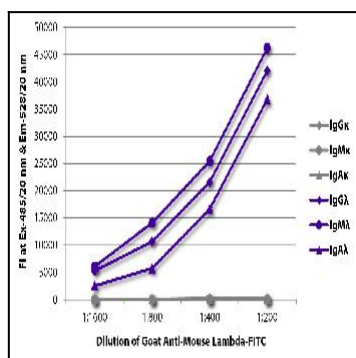


Figure 1: ELISA plate was coated with purified mouse IgGκ, IgMκ, IgAκ, IgGλ, IgMλ, and IgAλ. Immunoglobulins were detected with serially diluted Goat Anti-Mouse Lambda-FITC .

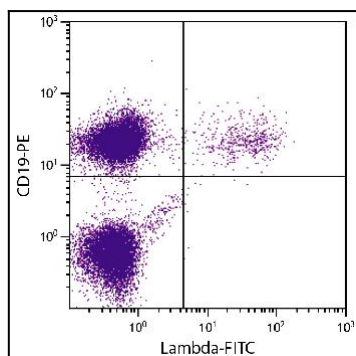


Figure 2: BALB/c mouse splenocytes were stained with Goat Anti-Mouse Lambda-FITC and Rat Anti-Mouse CD19-PE .