

### 31-1425: Goat Anti-Mouse IgG2a, Human ads-PE

**Application :** IHC,IHC-P,ELISA,FACS,WB,IHC-Fr

**Conjugate :** PE

**Isotype :** Goat IgG

#### Product Info

**Amount :** 0.5 mg

**Purification :** Affinity chromatography on mouse IgG<sub>2a</sub> covalently linked to agarose

**Content :** 0.5 mg/ml, 1.0 ml, Supplied in PBS/Sodium azide and a stabilizing agent

**Storage condition :** Store at 2-8°C

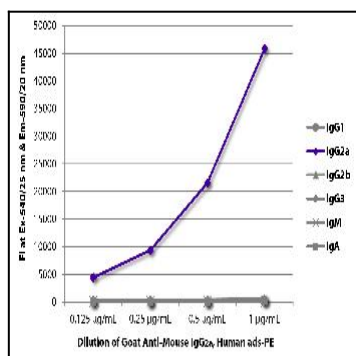


Figure 1: ELISA plate was coated with purified mouse IgG1, IgG2a, IgG2b, IgG3, IgM, and IgA. Immunoglobulins were detected with serially diluted Goat Anti-Mouse IgG2a, Human ads-PE .

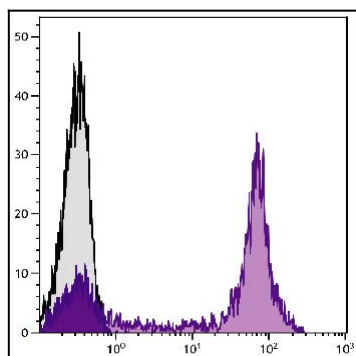


Figure 2: Human blood peripheral lymphocytes were stained with Mouse Anti-Human CD5 followed by Goat Anti-Mouse IgG2a, Human ads-PE.