

31-1534: Rat Anti-Mouse IgG2a-PE

Clonality : Monoclonal
Clone Name : SB84a
Application : IHC,ELISA,FACS,WB,IHC-Fr
Conjugate : PE
Isotype : Rat IgG1

Product Info

Amount : 0.2 mg
Content : 0.1 mg/ml, 2.0 ml, Supplied in PBS/Sodium azide and a stabilizing agent
Storage condition : Store at 2-8°C

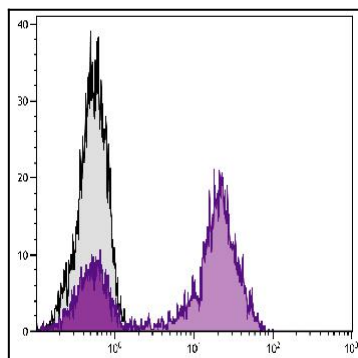


Figure 1: Human peripheral blood lymphocytes were stained with Mouse Anti-Human CD5 (Isotype - Mouse IgG2a) followed by Rat Anti-Mouse IgG2a-PE .

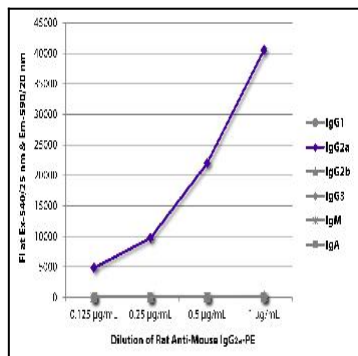


Figure 2: ELISA plate was coated with purified mouse IgG1, IgG2a, IgG2b, IgG3, IgM, and IgA. Immunoglobulins were detected with serially diluted Rat Anti-Mouse IgG2a-PE .