

## 31-1542: Rat Anti-Mouse IgA-PE

**Clonality :** Monoclonal  
**Clone Name :** 11-44-2  
**Application :** IHC,IHC-P,ELISA,FACS,WB,IHC-Fr  
**Conjugate :** PE  
**Isotype :** Rat IgG1, kappa

### Product Info

**Amount :** 0.1 mg  
**Content :** 0.1 mg/ml, 1.0 ml, Supplied in PBS/Sodium azide and a stabilizing agent  
**Storage condition :** Store at 2-8°C

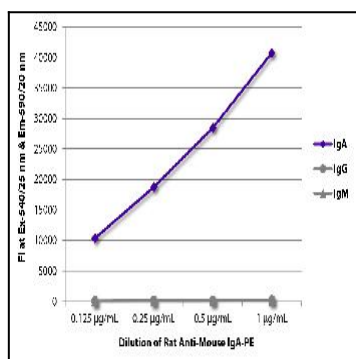


Figure 1: ELISA plate was coated with purified mouse IgM, IgG, and IgA. Immunoglobulins were detected with serially diluted Rat Anti-Mouse IgA-PE .

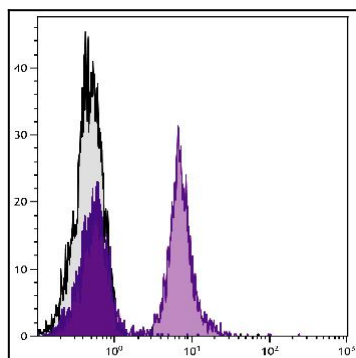


Figure 2: BALB/c mouse splenocytes were stained with Mouse Anti-Mouse CD19 followed by Rat Anti-Mouse IgA-PE.