

31-1566: Rat Anti-Mouse IgG2b-FITC

Clonality : Monoclonal
Clone Name : SB74g
Application : ELISA, FACS, WB
Conjugate : FITC
Isotype : Rat IgG2

Product Info

Amount : 0.5 mg
Content : 0.5 mg/ml, 1.0 ml, Supplied in PBS/Sodium azide
Storage condition : Store at 2-8°C

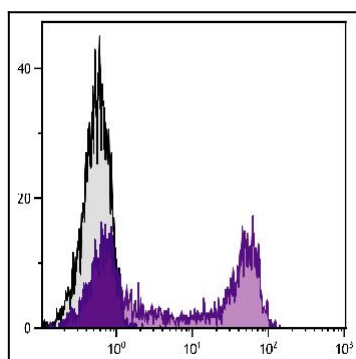


Figure 1: Human peripheral blood lymphocytes were stained with Mouse Anti-Human CD45RA primary (Isotype - Mouse IgG2b) followed by Rat Anti-Mouse IgG2b-FITC .

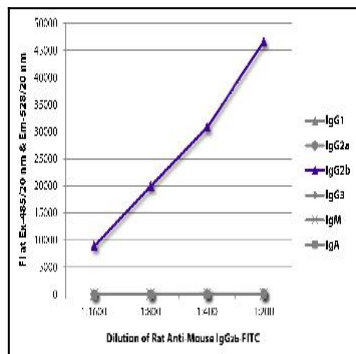


Figure 2: ELISA plate was coated with purified mouse IgG1, IgG2a, IgG2b, IgG3, IgM, and IgA. Immunoglobulins were detected with serially diluted Rat Anti-Mouse IgG2b-FITC .

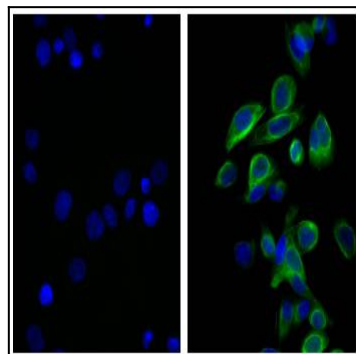


Figure 3: Human pancreatic carcinoma cell line MIA PaCa-2 was stained with Mouse Anti-Cytokeratin 18 followed by Rat Anti-Mouse IgG2b-FITC and DAPI.