

### 31-3110: Mouse Anti-Chicken CD8a-FITC

**Clonality :** Monoclonal

**Clone Name :** EP72

**Application :** IHC,FACS,IHC-Fr

**Conjugate :** FITC

**Isotype :** Mouse IgG2b

#### Product Info

**Amount :** 0.5 mg

**Content :** 0.5 mg/ml, 1.0 ml, Supplied in PBS/Sodium azide

**Storage condition :** Store at 2-8°C

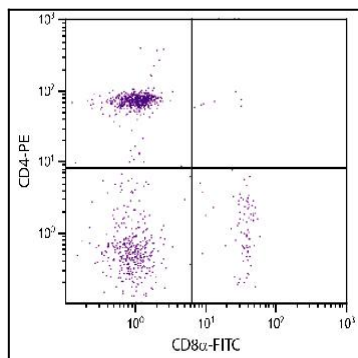


Figure 1: Chicken peripheral blood mononuclear cells were stained with Mouse Anti-Chicken CD8 $\alpha$ -FITC and Mouse Anti-Chicken CD4-PE .