

### 31-3133: Mouse Anti-Chicken Monocyte/Macrophage-FITC

**Clonality :** Monoclonal  
**Clone Name :** KUL01  
**Application :** IHC,IHC-P,FACS,IHC-Fr  
**Conjugate :** FITC  
**Isotype :** Mouse IgG1

#### Product Info

**Amount :** 0.5 mg  
**Content :** 0.5 mg/ml, 1.0 ml, Supplied in PBS/Sodium azide  
**Storage condition :** Store at 2-8°C

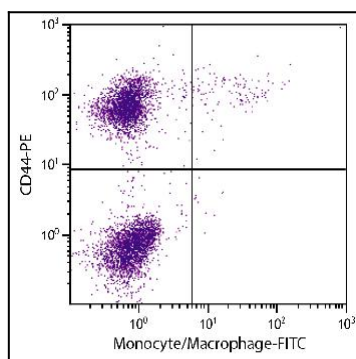


Figure 1: Chicken peripheral blood mononuclear cells were stained with Mouse Anti-Chicken Monocyte/Macrophage-FITC and Mouse Anti-Chicken CD44-PE .