

## 31-3147: Mouse Anti-Human IgM-FITC

**Clonality :** Monoclonal  
**Clone Name :** UHB  
**Application :** ELISA, FACS, WB  
**Conjugate :** FITC  
**Isotype :** Mouse IgG3, kappa

### Product Info

**Amount :** 0.5 mg  
**Content :** 0.5 mg/ml, 1.0 ml, Supplied in PBS/Sodium azide  
**Storage condition :** Store at 2-8°C

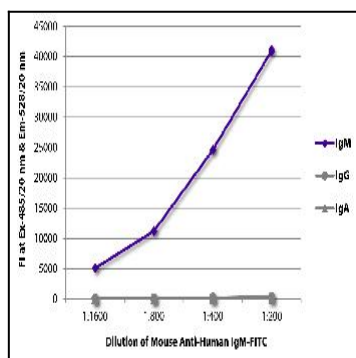


Figure 1: ELISA plate was coated with purified human IgM, IgG, and IgA. Immunoglobulins were detected with serially diluted Mouse Anti-Human IgM-FITC .

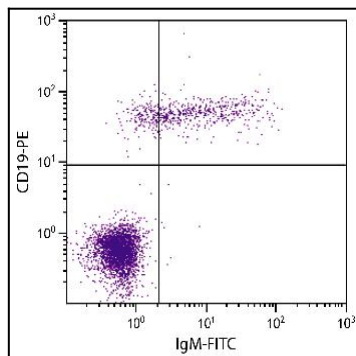


Figure 2: Human blood peripheral lymphocytes were stained with Mouse Anti-Human IgM-FITC and Mouse Anti-Human CD19-PE .