

31-3220: Mouse Anti-Human Lambda-FITC

Clonality : Monoclonal
Clone Name : JDC-12
Application : IP,ELISA,FACS,WB
Conjugate : FITC
Isotype : Mouse IgG1, kappa

Product Info

Amount : 0.5 mg
Content : 0.5 mg/ml, 1.0 ml, Supplied in PBS/Sodium azide
Storage condition : Store at 2-8°C

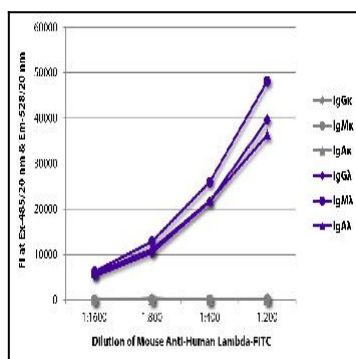


Figure 1: ELISA plate was coated with purified human IgG¹, IgM¹, IgA¹, IgG¹, IgM¹, and IgA¹. Immunoglobulins were detected with serially diluted Mouse Anti-Human Lambda-FITC .