

31-3221: Mouse Anti-Human Lambda-AP

Clonality : Monoclonal
Clone Name : JDC-12
Application : IP,ELISA,FACS,WB
Conjugate : AKP
Isotype : Mouse IgG1, kappa

Product Info

Amount : 1.0 ml
Content : 1.0 ml, Supplied in a stock solution 50 mM Tris/1 mM Magnesium chloride/50% glycerol, pH 8.0, containing Sodium azide as preservative
Storage condition : Store at 2-8°C

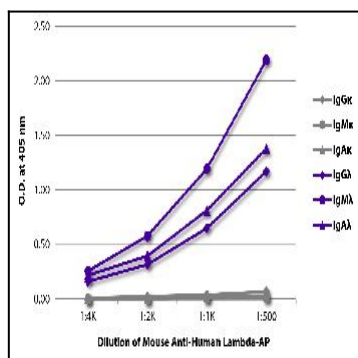


Figure 1: ELISA plate was coated with purified human IgGκ, IgMκ, IgAκ, IgGλ, IgMλ, and IgAλ. Immunoglobulins were detected with serially diluted Mouse Anti-Human Lambda-AP .