

31-3244: Mouse Anti-Human Kappa-FITC

Clonality : Monoclonal

Clone Name : SB81a

Application : ELISA, FACS

Conjugate : FITC

Isotype : Mouse IgG1

Product Info

Amount : 0.5 mg

Content : 0.5 mg/ml, 1.0 ml, Supplied in PBS/Sodium azide

Storage condition : Store at 2-8°C

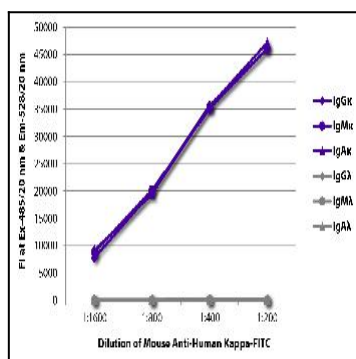


Figure 1: ELISA plate was coated with purified human IgG κ , IgM κ , IgA κ , IgG λ , IgM λ , and IgA λ . Immunoglobulins were detected with serially diluted Mouse Anti-Human Kappa-FITC .