

36-1446: Monoclonal Antibody to MUC1 / EMA / CD227 (Epithelial Marker)(Clone : MUC1/520)

Clonality :	Monoclonal
Clone Name :	MUC1/520
Application :	IHC
Reactivity :	Human
Gene :	MUC1
Gene ID :	4582
Uniprot ID :	P15941
Format :	Purified
Alternative Name :	MUC1,PUM
Isotype :	Mouse IgG2a, lambda
Immunogen Information :	Human milk-fat globule membranes (HMFGM)

Description

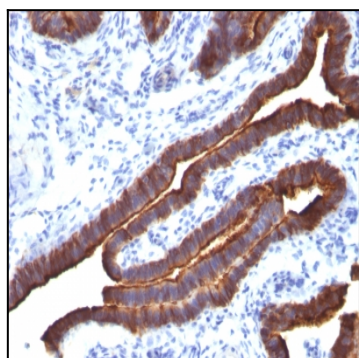
In Western blotting, it recognizes proteins in MW range of 265-400kDa, identified as different glycoforms of EMA. EMA may provide a protective layer on epithelial cells against bacterial and enzyme attack. In immunohistochemical assays, it superbly stains routine formalin/paraffin carcinomas. Antibody to EMA is useful as a pan-epithelial marker for detecting early metastatic loci of carcinoma in bone marrow or liver.

Product Info

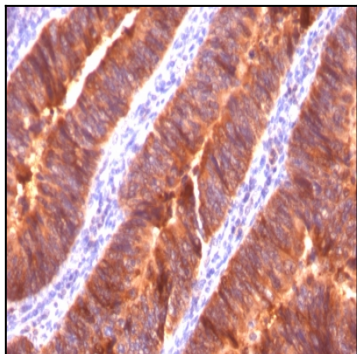
Amount :	100 µg
Purification :	Affinity Chromatography
Content :	100 µg in 500 µl PBS containing 0.05% BSA and 0.05% sodium azide. Sodium azide is highly toxic.
Storage condition :	Store the antibody at 4°C; stable for 6 months. For long-term storage; store at -20°C. Avoid repeated freeze and thaw cycles.

Application Note

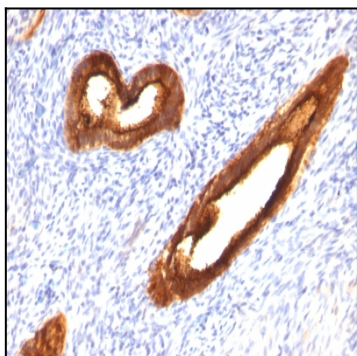
Immunohistology (Formalin-fixed) (0.5-1.0ug/ml for 30 min at RT),(Staining of formalin-fixed tissues requires boiling tissue sections in 10mM citrate buffer, pH 6.0, for 10-20 min followed by cooling at RT for 20 minutes),



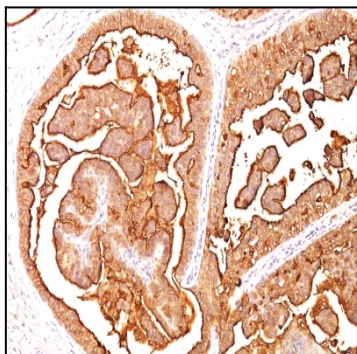
Formalin-fixed, paraffin-embedded human Ovarian Carcinoma stained with MUC-1 / EMA Monoclonal Antibody (MUC1/520).



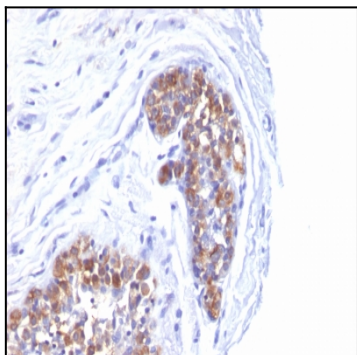
Formalin-fixed, paraffin-embedded human Colon Carcinoma stained with MUC-1 / EMA Monoclonal Antibody (MUC1/520).



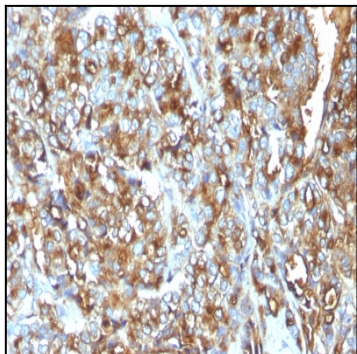
Formalin-fixed, paraffin-embedded human Endometrial Carcinoma stained with MUC-1 / EMA Monoclonal Antibody (MUC1/520).



Formalin-fixed, paraffin-embedded human Breast Carcinoma stained with MUC-1 / EMA Monoclonal Antibody (MUC1/520).



Formalin-fixed, paraffin-embedded human Breast Carcinoma stained with MUC-1 / EMA Monoclonal Antibody (MUC1/520).



Formalin-fixed, paraffin-embedded human Breast Carcinoma stained with MUC-1 / EMA Monoclonal Antibody (MUC1/520).