

31-3467: Mouse Anti-Human CD36-FITC (Clone: SMĭ•)

Clonality :	Monoclonal
Clone Name :	SMĭ•
Application :	FACS
Conjugate :	FITC
Gene :	CD36
Gene ID :	948
Uniprot ID :	P16671
Alternative Name :	CD36, GP3B, GP4
Isotype :	Mouse IgM, kappa
Immunogen Information :	Tonsil cells and peripheral blood mononuclear cells.

Description

CD36, also known as GPIV, is an 88 kDa glycoprotein that is a receptor for extracellular matrix proteins such as collagen and thrombospondin. Its expression is restricted to platelets, monocytes, macrophages, erythrocyte precursors, adipocytes, activated keratinocytes, and some endothelial and epithelial cells. CD36 is a multifunctional protein that has roles as a cell adhesion molecule, a scavenger receptor, a signal transducer and in the pathogenesis of malaria via its affinity for *Plasmodium falciparum* erythrocyte membrane protein 1 (PEMP1). CD36 on macrophages functions in the phagocytic clearance of apoptotic cells.

Product Info

Amount :	100 Tests
Content :	1.0 ml, Supplied in PBS/Sodium azide
Storage condition :	Store at 2-8°C

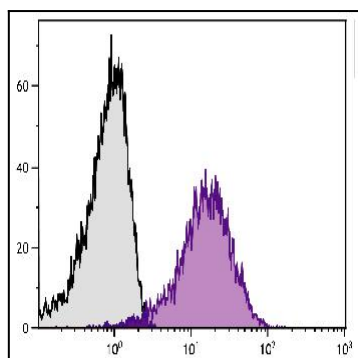


Figure 1: Human peripheral blood platelets were stained with Mouse Anti-Human CD36-FITC . Purple: CD36- FITC, Gray: FITC conjugated Isotype control.