

10-4088-F: Monoclonal Antibody to Mouse CD25 (Clone: PC61) FITC conjugated

Clonality :	Monoclonal
Clone Name :	PC61
Application :	FACS
Reactivity :	Mouse
Conjugate :	FITC
Gene :	Il2ra
Gene ID :	16184
Uniprot ID :	P01590
Format :	Purified
Alternative Name :	p55, Il2r
Isotype :	Rat IgG1
Immunogen Information :	The B6.1 mouse cytotoxic T cell line was used as immunogen for this antibody.

Description

CD25 is the alpha chain of the IL-2 receptor. It is a type I transmembrane protein present on activated T cells, activated B cells, some thymocytes, myeloid precursors, and oligodendrocytes that associates with CD122 to form a heterodimer that can act as a high-affinity receptor for IL-2. Though CD25 has been shown to influence effector function of lymphocytes, it is thought to play a greater role in immune tolerance in mice. Constitutive expression of CD25 on Treg cells is thought to be crucial to their survival and maintenance of immune homeostasis. Expression of CD25 and its role in immunology may be species dependent, since CD25 appears to play a larger role in T-cell effector responses in humans compared to mice, and may be somewhat dispensable for the maintenance of Treg cells as seen in patients treated with CD25-blocking antibodies.

Product Info

Amount :	25 µg / 100 µg
Purification :	Protein G Chromatography
Content :	0.2 mg/ml in Tris buffer containing 0.05% Azide
Storage condition :	Store the antibody at 4°C, stable for 6 months.

Application Note

FACS: 0.5-1 µg/10⁶ cells

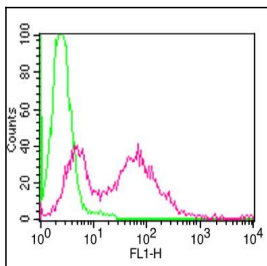


Figure-1: Cell Surface flow analysis of mouse CD25 in Con-A treated mouse splenocytes using 0.5 µg/10⁶ cells. Green represents isotype control; red represents FITC conjugated anti-mouse CD25 antibody (10-4088F, clone: PC61).