

10-4123: Monoclonal Antibody to Mouse CD3 (Clone: 145-2C11)

| | |
|--------------------------------|---|
| Clonality : | Monoclonal |
| Clone Name : | 145-2C11 |
| Application : | FACS |
| Reactivity : | Mouse |
| Gene : | Cd247 |
| Gene ID : | 12503 |
| Uniprot ID : | P24161 |
| Format : | Purified |
| Alternative Name : | T-cell surface glycoprotein CD3 zeta chain,T-cell receptor T3 zeta chain,CD247 |
| Isotype : | Hamster IgG |
| Immunogen Information : | Mouse BM10-37 cytotoxic T lymphocytes were used as immunogen for this antibody. |

Description

CD3 is one of the several invariant chains that the variable chains of TCR: Alpha beta or Gamma delta TCR contains, and which support surface TCR expression and transduce the TCR signal. CD3D, along with four other CD3 subunits, binds either TCR alpha/beta or TCR gamma/delta to form the TCR/CD3 complex on the surface of T-cells. Defects in this gene are a cause of severe combined immunodeficiency autosomal recessive T-cell-negative/B-cell-positive/NK-cell-positive (SCIDBNK).

Product Info

| | |
|----------------------------|---|
| Amount : | 25 µg / 100 µg |
| Purification : | Protein G Chromatography |
| Content : | 25 µg in 50 µl/100 µg in 200 µl PBS containing 0.05% BSA and 0.05% sodium azide. Sodium azide is highly toxic. |
| Storage condition : | Store the antibody at 4°C, stable for 6 months. For long-term storage, store at -20°C. Avoid repeated freeze and thaw cycles. |

Application Note

FACS: 0.5-1 µg/10⁶ cells

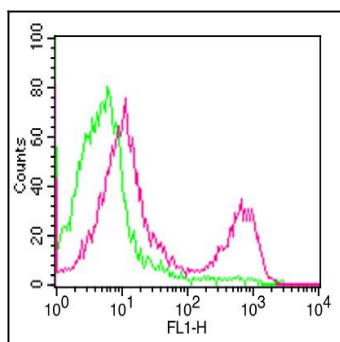


Figure-1: Cell Surface flow analysis of mouse CD3 in splenocytes using 0.5 µg/10⁶ cells. Green represents isotype control; red represents mouse CD3 antibody (10-4123). Goat anti-hamster IgG FITC conjugate secondary antibody (ABEOMICS) was used.