

10-4123-F: Monoclonal Antibody to Mouse CD3 (Clone: 145-2C11) FITC conjugated

Clonality :	Monoclonal
Clone Name :	145-2C11
Application :	FACS
Reactivity :	Mouse
Conjugate :	FITC
Gene :	Cd247
Gene ID :	12503
Uniprot ID :	P24161
Format :	Purified
Alternative Name :	T-cell surface glycoprotein CD3 zeta chain,T-cell receptor T3 zeta chain,CD247
Isotype :	Hamster IgG
Immunogen Information :	Mouse BM10-37 cytotoxic T lymphocytes were used as immunogen for this antibody.

Description

CD3 is one of the several invariant chains that the variable chains of TCR: Alpha beta or Gamma delta TCR contains, and which support surface TCR expression and transduce the TCR signal. CD3D, along with four other CD3 subunits, binds either TCR alpha/beta or TCR gamma/delta to form the TCR/CD3 complex on the surface of T-cells. Defects in this gene are a cause of severe combined immunodeficiency autosomal recessive T-cell-negative/B-cell-positive/NK-cell-positive (SCIDBNK).

Product Info

Amount :	25 µg / 100 µg
Purification :	Protein G Chromatography
Content :	0.2 mg/ml in Tris buffer containing 0.05% Azide
Storage condition :	Store the antibody at 4°C, stable for 6 months.

Application Note

FACS: 0.5-1 µg/10⁶ cells

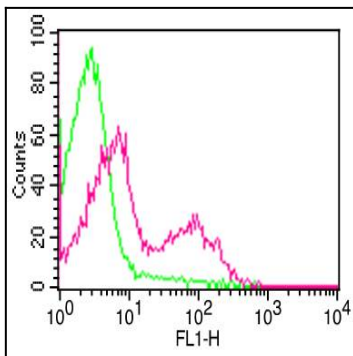


Figure-1: Cell Surface flow analysis of mouse CD3 in mouse splenocytes using 0.5 µg/10⁶ cells. Green represents isotype control; red represents FITC conjugate mouse CD3 antibody (10-4123F).