

## 10-4128: Monoclonal Antibody to Human CD13 (Clone: BF10)

<b>Clonality :</b>	Monoclonal
<b>Clone Name :</b>	BF10
<b>Application :</b>	FACS
<b>Reactivity :</b>	Human
<b>Gene :</b>	ANPEP
<b>Gene ID :</b>	290
<b>Uniprot ID :</b>	P15144
<b>Format :</b>	Purified
<b>Alternative Name :</b>	Aminopeptidase N,Alanyl aminopeptidase,Aminopeptidase M,Microsomal aminopeptidase,gp150,
<b>Isotype :</b>	Mouse IgG1 Kappa
<b>Immunogen Information :</b>	KG-1a cell line were used as immunogen for this antibody.

### Product Info

<b>Amount :</b>	25 µg / 100 µg
<b>Purification :</b>	Protein G Chromatography
<b>Content :</b>	25 µg in 50 µl/100 µg in 200 µl PBS containing 0.05% BSA and 0.05% sodium azide. Sodium azide is highly toxic.
<b>Storage condition :</b>	Store the antibody at 4°C, stable for 6 months. For long-term storage, store at -20°C. Avoid repeated freeze and thaw cycles.

### Application Note

FACS: 0.2-0.5 µg/10<sup>6</sup> cells

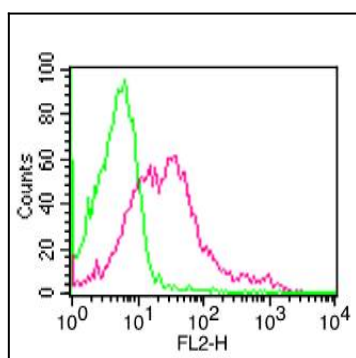


Fig-1: Cell Surface flow analysis of CD13 in PBMC (Granulocytes gated) using 1 µg/10<sup>6</sup> cells. Green represents isotype control (ABEOMICS); red represents anti-CD13 antibody (10-4128). Goat anti-mouse PE conjugated secondary antibody(ABEOMICS) was used.