

## 10-4131: Monoclonal Antibody to CD10 (Clone: CB-CALLA)

<b>Clonality :</b>	Monoclonal
<b>Clone Name :</b>	CB-CALLA
<b>Application :</b>	FACS
<b>Reactivity :</b>	Human
<b>Gene :</b>	MME
<b>Gene ID :</b>	4311
<b>Uniprot ID :</b>	P08473
<b>Format :</b>	Purified
<b>Alternative Name :</b>	Nepriylsin,Atriopeptidase,Common acute lymphocytic leukemia antigen,Enkephalinase,Neutral endopeptidase 24.11,Skin fibroblast elastase,SFE
<b>Isotype :</b>	Mouse IgG2b Kappa
<b>Immunogen Information :</b>	Full length recombinant protein of human CD10 was used as immunogen for this antibody.

### Description

CD10 is a membrane-associated neutral peptidase, also known as neprilysin, enkephalinase, common acute lymphoblastic leukemia antigen, and neutral endopeptidase. It acts as a cell surface enzyme with neutral metalloendopeptidase activity, is a marker for intestinal epithelial brush border. It is also present in normal bile ducts and gallbladder epithelia but is absent in cholangiocarcinomas.

### Product Info

<b>Amount :</b>	25 µg / 100 µg
<b>Purification :</b>	Protein G Chromatography
<b>Content :</b>	25 µg in 50 µl/100 µg in 200 µl PBS containing 0.05% BSA and 0.05% sodium azide. Sodium azide is highly toxic.
<b>Storage condition :</b>	Store the antibody at 4°C, stable for 6 months. For long-term storage, store at -20°C. Avoid repeated freeze and thaw cycles.

### Application Note

FACS: 1-2 µg/10<sup>6</sup> cells

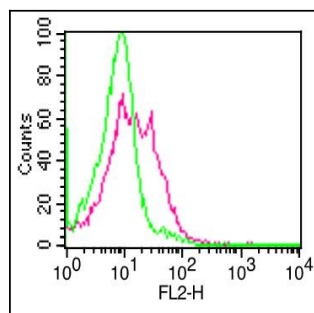


Figure-1: Cell Surface flow analysis of hCD10 in PBMC (Lymphocyte gated) using 1 µg/10<sup>6</sup> cells. Green represents isotype control (ABEOMICS); red represents anti-CD10 antibody (10-4131, clone:CB-CALLA). Goat anti-mouse PE conjugated secondary antibody (ABEOMICS) was used.