

10-4131-F: Monoclonal Antibody to CD10 (Clone: CB-CALLA) FITC conjugated

Clonality :	Monoclonal
Clone Name :	CB-CALLA
Application :	FACS
Reactivity :	Human
Conjugate :	FITC
Gene :	MME
Gene ID :	4311
Uniprot ID :	P08473
Format :	Purified
Alternative Name :	Neprilysin,Atriopeptidase,Common acute lymphocytic leukemia antigen,Enkephalinase,Neutral endopeptidase 24.11,Skin fibroblast elastase,SFE
Isotype :	Mouse IgG2b Kappa
Immunogen Information :	Full length recombinant protein of human CD10 was used as immunogen for this antibody.

Description

CD10 is a membrane-associated neutral peptidase, also known as neprilysin, enkephalinase, common acute lymphoblastic leukemia antigen, and neutral endopeptidase. It acts as a cell surface enzyme with neutral metalloendopeptidase activity, is a marker for intestinal epithelial brush border. It is also present in normal bile ducts and gallbladder epithelia but is absent in cholangiocarcinomas.

Product Info

Amount :	25 µg / 100 µg
Purification :	Protein G Chromatography
Content :	0.2 mg/ml in Tris buffer containing 0.05% Azide
Storage condition :	Store the antibody at 4°C, stable for 6 months.

Application Note

FACS: 0.5-1 µg/10⁶ cells

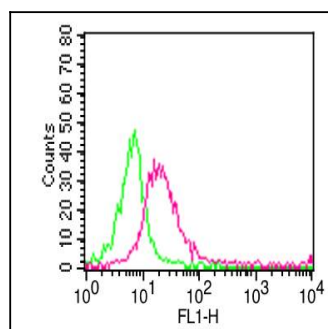


Figure-1: Cell Surface flow analysis of hCD10 in PBMC (Monocyte gated) using 1 µg/10⁶ cells. Green represents isotype control (ABEOMICS); red represents FITC conjugate anti-hCD10 antibody (10-4131F, clone:CALLA).