

## 10-4133: Monoclonal Antibody to Human CD1a (Clone: CBT6)

<b>Clonality :</b>	Monoclonal
<b>Clone Name :</b>	CBT6
<b>Application :</b>	FACS
<b>Reactivity :</b>	Human
<b>Gene :</b>	CD1A
<b>Gene ID :</b>	909
<b>Uniprot ID :</b>	P06126
<b>Format :</b>	Purified
<b>Alternative Name :</b>	cluster of differentiation 1 A,cortical thymocyte antigen CD1A,differentiation antigen CD1-alpha-3,epidermal dendritic cell marker CD1a,hTa1 thymocyte antigen,HTA1
<b>Isotype :</b>	Mouse IgG1 Kappa

### Product Info

<b>Amount :</b>	25 µg / 100 µg
<b>Purification :</b>	Protein G Chromatography
<b>Content :</b>	25 µg in 50 µl/100 µg in 200 µl PBS containing 0.05% BSA and 0.05% sodium azide. Sodium azide is highly toxic.
<b>Storage condition :</b>	Store the antibody at 4°C, stable for 6 months. For long-term storage, store at -20°C. Avoid repeated freeze and thaw cycles.

### Application Note

FACS: 1-2 µg/10<sup>6</sup> cells

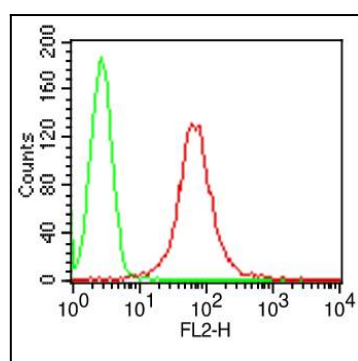


Fig-1: Cell Surface flow analysis of hCD1a in Molt-4 cells using 1 µg/10<sup>6</sup> cells. Green represents isotype control (ABEOMICS); red represents anti-hCD1a antibody (10-4133, clone:CBT6). Goat anti-mouse PE conjugated secondary antibody (ABEOMICS) was used.