

10-4134: Monoclonal Antibody to Human MHCII/HLA DQ (Clone: SPVL3)

| | |
|--------------------------------|--|
| Clonality : | Monoclonal |
| Clone Name : | SPVL3 |
| Application : | FACS,IF |
| Reactivity : | Human |
| Gene : | HLA-DQA1 |
| Gene ID : | 3117 |
| Uniprot ID : | P01909 |
| Format : | Purified |
| Alternative Name : | HLA class II histocompatibility antigen,DQ alpha 1 chain,DC-1 alpha chain,DC-alpha,HLA-DCA,MHC class II DQA1 |
| Isotype : | Mouse IgG2a Kappa |
| Immunogen Information : | Cells of T4 and CTL clone HG-38 were used as immunogen for this antibody. |

Product Info

| | |
|----------------------------|---|
| Amount : | 25 µg / 100 µg |
| Purification : | Protein G Chromatography |
| Content : | 25 µg in 50 µl/100 µg in 200 µl PBS containing 0.05% BSA and 0.05% sodium azide. Sodium azide is highly toxic. |
| Storage condition : | Store the antibody at 4°C, stable for 6 months. For long-term storage, store at -20°C. Avoid repeated freeze and thaw cycles. |

Application Note

FACS: 0.5-1 µg/10⁶ cells

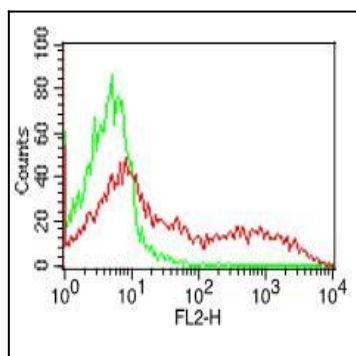


Fig-1: Cell Surface flow analysis of MHCII-DLADQ in PBMC (Lymphocyte gated) using 0.5 µg/10⁶ cells. Green represents isotype control (ABEOMICS); red represents anti-hMHCII-HLADQ antibody (10-4134, clone:SPVL3). Goat anti-mouse PE conjugated secondary antibody (ABEOMICS) was used.