

10-4142: Monoclonal Antibody to Human CD29 (Clone: C29MOON)

Clonality :	Monoclonal
Clone Name :	C29MOON
Application :	FACS
Reactivity :	Human
Gene :	ITGB1
Gene ID :	3688
Uniprot ID :	P05556
Format :	Purified
Alternative Name :	Integrin beta-1, Fibronectin receptor subunit beta, Glycoprotein Iia, VLA-4 subunit beta, CD29
Isotype :	Mouse IgG1 Kappa

Product Info

Amount :	25 µg / 100 µg
Purification :	Protein G Chromatography
Content :	25 µg in 50 µl/100 µg in 200 µl PBS containing 0.05% BSA and 0.05% sodium azide. Sodium azide is highly toxic.
Storage condition :	Store the antibody at 4°C, stable for 6 months. For long-term storage, store at -20°C. Avoid repeated freeze and thaw cycles.

Application Note

FACS: 0.5-1 µg/10⁶ cells

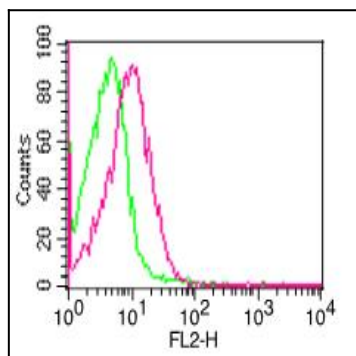


Fig-1: Cell Surface flow analysis of hCD29 in PBMC (Lymphocytes) using 0.5 µg/10⁶ cells. Green represents isotype control (ABEOMICS); red represents anti-hCD29 antibody (10-4142). Goat anti-mouse PE conjugated secondary antibody (ABEOMICS) was used.