

10-4145: Monoclonal Antibody to Human CD11a (Clone: DF1524)

| | |
|--------------------------------|---|
| Clonality : | Monoclonal |
| Clone Name : | DF1524 |
| Application : | FACS |
| Reactivity : | Human |
| Gene : | ITGAL |
| Gene ID : | 3683 |
| Uniprot ID : | P20701 |
| Format : | Purified |
| Alternative Name : | Integrin alpha-L,CD11 antigen-like family member A,Leukocyte adhesion glycoprotein LFA-1 alpha chain,Leukocyte function-associated molecule 1 alpha chain,CD11a |
| Isotype : | Mouse IgG1 Kappa |
| Immunogen Information : | full length Recombinant protein of human CD11a was used as immunogen for this antibody. |

Product Info

| | |
|----------------------------|---|
| Amount : | 25 µg / 100 µg |
| Purification : | Protein G Chromatography |
| Content : | 25 µg in 50 µl/100 µg in 200 µl PBS containing 0.05% BSA and 0.05% sodium azide. Sodium azide is highly toxic. |
| Storage condition : | Store the antibody at 4°C, stable for 6 months. For long-term storage, store at -20°C. Avoid repeated freeze and thaw cycles. |

Application Note

FACS: 0.5-1 µg/10⁶ cells

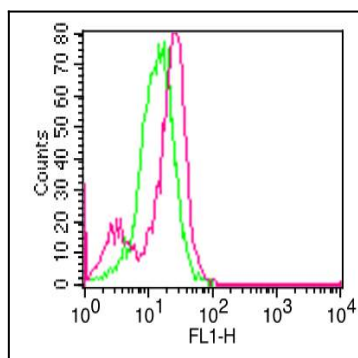


Fig-1: Cell Surface flow analysis of hCD11a in PBMC (Monocyte gated) using 0.5 µg/10⁶ cells. Green represents isotype control (ABEOMICS); red represents anti-hCD11a antibody (10-4145). Goat anti-mouse FITC conjugated secondary antibody (ABEOMICS) was used.