

## 10-4145-F: Monoclonal Antibody to Human CD11a (Clone: DF1524) FITC conjugated

<b>Clonality :</b>	Monoclonal
<b>Clone Name :</b>	DF1524
<b>Application :</b>	FACS
<b>Reactivity :</b>	Human
<b>Conjugate :</b>	FITC
<b>Gene :</b>	ITGAL
<b>Gene ID :</b>	3683
<b>Uniprot ID :</b>	P20701
<b>Format :</b>	Purified
<b>Alternative Name :</b>	Integrin alpha-L,CD11 antigen-like family member A,Leukocyte adhesion glycoprotein LFA-1 alpha chain,Leukocyte function-associated molecule 1 alpha chain,CD11a
<b>Isotype :</b>	Mouse IgG1 Kappa
<b>Immunogen Information :</b>	full length Recombinant protein of human CD11a was used as immunogen for this antibody.

### Product Info

<b>Amount :</b>	100 µg
<b>Purification :</b>	Protein G Chromatography
<b>Content :</b>	0.2 mg/ml in Tris buffer containing 0.05% Azide
<b>Storage condition :</b>	Store the antibody at 4°C, stable for 6 months.

### Application Note

FACS: 0.5-1 µg/10<sup>6</sup> cells

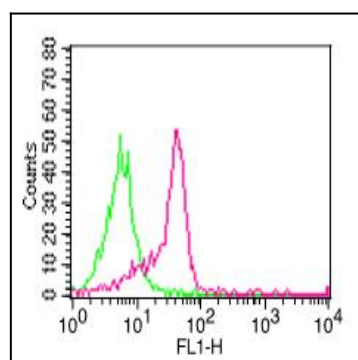


Fig-1: Cell Surface flow analysis of hCD11a in PBMC (Monocyte gated) using 0.5 µg/10<sup>6</sup> cells. Green represents isotype control (ABEOMICS); red represents FITC conjugate anti-hCD11a antibody (10-4145F).