

## 10-4149: Monoclonal Antibody to Human CD38 (Clone: FS02)

<b>Clonality :</b>	Monoclonal
<b>Clone Name :</b>	FS02
<b>Application :</b>	FACS
<b>Reactivity :</b>	Human
<b>Gene :</b>	CD38
<b>Gene ID :</b>	952
<b>Uniprot ID :</b>	P28907
<b>Format :</b>	Purified
<b>Alternative Name :</b>	ADP-ribosyl cyclase/cyclic ADP-ribose hydrolase 1,2'-phospho-ADP-ribosyl cyclase,2'-phospho-ADP-ribosyl cyclase/2'-phospho-cyclic-ADP-ribose transferase,2'-phospho-cyclic-ADP-ribose transferase,Cyclic ADP-ribose hydrolase 1
<b>Isotype :</b>	Mouse IgG1 Kappa

### Product Info

<b>Amount :</b>	25 µg / 100 µg
<b>Purification :</b>	Protein G Chromatography
<b>Content :</b>	25 µg in 50 µl/100 µg in 200 µl PBS containing 0.05% BSA and 0.05% sodium azide. Sodium azide is highly toxic.
<b>Storage condition :</b>	Store the antibody at 4°C, stable for 6 months. For long-term storage, store at -20°C. Avoid repeated freeze and thaw cycles.

### Application Note

FACS: 0.5-1 µg/10<sup>6</sup> cells

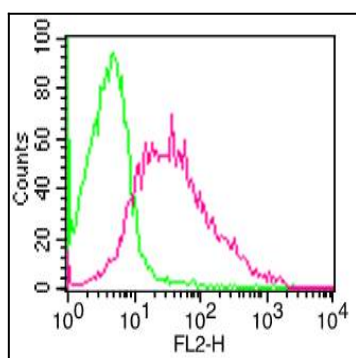


Fig-1: Cell Surface flow staining of hCD38 in PBMC (Lymphocyte gated) using 0.5 µg/10<sup>6</sup> cells. Green represents isotype control (ABEOMICS); red represents anti-hCD38 antibody (10-4149). Goat anti-mouse PE conjugated secondary antibody (ABEOMICS) was used.