

10-4157: Monoclonal Antibody to Human CD11a (Clone: Cris3)

Clonality :	Monoclonal
Clone Name :	Cris3
Application :	FACS
Reactivity :	Human
Gene :	ITGAL
Gene ID :	3683
Uniprot ID :	P20701
Format :	Purified
Alternative Name :	CD11 antigen-like family member A,CD11a antigen,CD11Aantigen CD11A (p180),lymphocyte function-associated antigen 1,alphapolypeptide,ntegrin,alpha L (antigen CD11A (p180),lymphocyte function-associated antigen1; alpha polypeptide),Leukocyte adhesion glycoprotein LFA-1 alpha chain,Leukocyte function-associated molecule 1 alpha chain
Isotype :	Mouse IgG2b, Kappa
Immunogen Information :	Stimulated human leukocytes were used as immunogen for this antibody.

Product Info

Amount :	25 µg / 100 µg
Purification :	Protein G Chromatography
Content :	25 µg in 50 µl/100 µg in 200 µl PBS containing 0.05% BSA and 0.05% sodium azide. Sodium azide is highly toxic.
Storage condition :	Store the antibody at 4°C, stable for 6 months. For long-term storage, store at -20°C. Avoid repeated freeze and thaw cycles.

Application Note

FACS: 0.5-1 µg/10⁶ cells

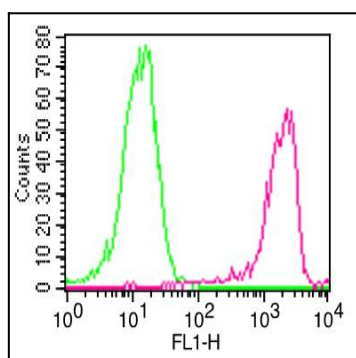


Fig-1: Cell Surface flow analysis of hCD11a in PBMC using 0.5 µg/10⁶ cell. Green represents isotype control (ABEOMICS); red represents anti-hCD11a antibody (10-4157). Goat anti-mouse PE conjugated secondary antibody (ABEOMICS) was used.