

10-1032: Monoclonal Antibody to Human ATF2 (Clone: ABM16E7)

Clonality :	Monoclonal
Clone Name :	ABM16E7
Application :	WB
Reactivity :	Mouse,Human
Gene :	ATF2
Gene ID :	1386
Uniprot ID :	P15336
Format :	Purified
Alternative Name :	Cyclic AMP-dependent transcription factor ATF-2 ,cAMP-dependent transcription factor ATF-2,Activating transcription factor 2,Cyclic AMP-responsive element-binding protein 2,HB16,Histone acetyltransferase ATF2,cAMP response element-binding protein CRE-BP1
Isotype :	Mouse IgG1, kappa
Immunogen Information :	A partial length recombinant protein of human ATF2 was used as immunogen for this antibody.

Product Info

Amount :	25 µg / 100 µg
Purification :	Protein G Chromatography
Content :	25 µg in 50 µl/100 µg in 200 µl PBS containing 0.05% BSA and 0.05% sodium azide. Sodium azide is highly toxic.
Storage condition :	Store the antibody at 4°C, stable for 6 months. For long-term storage, store at -20°C. Avoid repeated freeze and thaw cycles.

Application Note

WB: 4-6 µg/ml

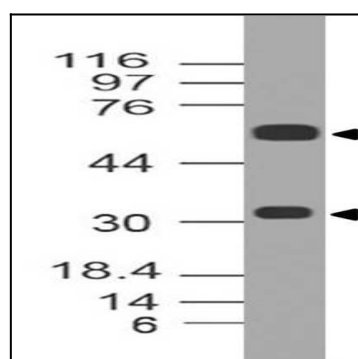


Figure-1: Western blot analysis of ATF2. Anti- ATF2 antibody (Clone: ABM16E7) was tested at 2 µg/ml on PC3 lysate.

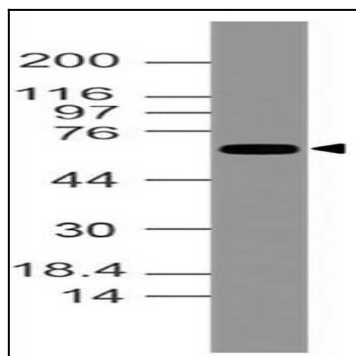


Figure-2: Western blot analysis of ATF2. Anti- ATF2 antibody (Clone: ABM16E7) was tested at 4 μ g/ml on EL-4 lysate.