

10-4147: Monoclonal Antibody to Human CD106 (Clone: BK9)

| | |
|--------------------------------|--|
| Clonality : | Monoclonal |
| Clone Name : | BK9 |
| Application : | FACS |
| Reactivity : | Human |
| Gene : | VCAM1 |
| Gene ID : | 7412 |
| Uniprot ID : | P19320 |
| Format : | Purified |
| Alternative Name : | Vascular cell adhesion protein 1, INCAM-100, CD106 |
| Isotype : | Mouse IgG1 Kappa |
| Immunogen Information : | Activated human umbilical vein endothelial cells (HUVEC) were used as the immunogen for this antibody. |

Product Info

| | |
|----------------------------|---|
| Amount : | 25 µg / 100 µg |
| Purification : | Protein G Chromatography |
| Content : | 25 µg in 50 µl/100 µg in 200 µl PBS containing 0.05% BSA and 0.05% sodium azide. Sodium azide is highly toxic. |
| Storage condition : | Store the antibody at 4°C, stable for 6 months. For long-term storage, store at -20°C. Avoid repeated freeze and thaw cycles. |

Application Note

FACS: 0.5-1 µg/10⁶ cells

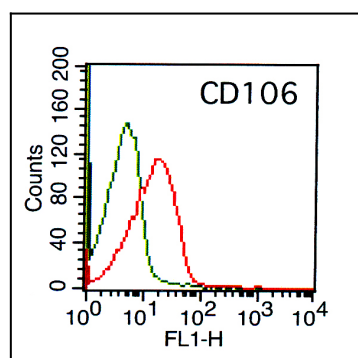


Fig-1: Cell Surface flow analysis of hCD106 in PBMC (Lymphocytes gated) using 1 µg/10⁶ cells. Green represents isotype control (ABEOMICS); red represents anti-hCD106 antibody (10-4147). Goat anti-mouse FITC conjugated secondary antibody (ABEOMICS) was used.