

35-1001: Polyclonal Antibody to GSK3beta (Phospho-Ser9)

| | |
|--------------------------------|---|
| Clonality : | Polyclonal |
| Application : | IHC,WB,IF |
| Reactivity : | Rat,Mouse,Human |
| Gene : | GSK3B |
| Gene ID : | 2932 |
| Uniprot ID : | P49841 |
| Format : | Purified |
| Alternative Name : | Factor A,GSK-3 beta,Protein kinase GSK-3-beta, kinase GSK-3 beta |
| Isotype : | Rabbit IgG |
| Immunogen Information : | Peptide sequence around phosphorylation site of serine 9 (T-T-S(p)-F-A) derived from Human GSK3 beta. |

Description

Participates in the Wnt signaling pathway. Implicated in the hormonal control of several regulatory proteins including glycogen synthase, MYB and the transcription factor JUN. Phosphorylates JUN at sites proximal to its DNA-binding domain, thereby reducing its affinity for DNA. Phosphorylates MUC1 in breast cancer cells, and decreases the interaction of MUC1 with CTNNB1/beta-catenin. Phosphorylates CTNNB1/beta-catenin.

Product Info

| | |
|----------------------------|--|
| Amount : | 50 µl / 100 µl |
| Content : | Supplied at 1.0mg/mL in phosphate buffered saline (without Mg ²⁺ and Ca ²⁺), pH 7.4, 150mM NaCl, 0.02% sodium azide and 50% glycerol. |
| Storage condition : | Store the antibody at 4°C, stable for 6 months. For long-term storage, store at -20°C. Avoid repeated freeze and thaw cycles. |

Application Note

Predicted MW: 46kd, Western blotting: 1:500~1:1000, Immunohistochemistry: 1:50~1:100, Immunofluorescence: 1:100~1:200

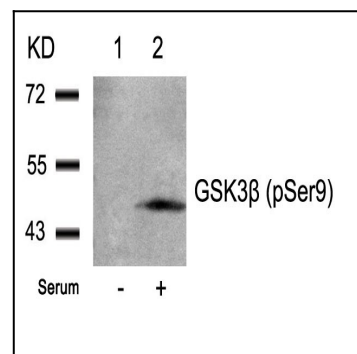


Figure 1: Western blot analysis of extracts from 293 cells untreated(lane 1) or treated with serum(lane 2) using GSK3 β fY(Phospho-Ser9) Antibody 35-1001.

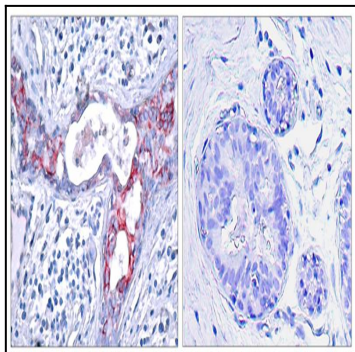


Figure 2: Immunohistochemical analysis of paraffin-embedded human breast carcinoma tissue using GSK3 β (Phospho-Ser9) Antibody 35-1001 (left) or the same antibody preincubated with blocking peptide (right).

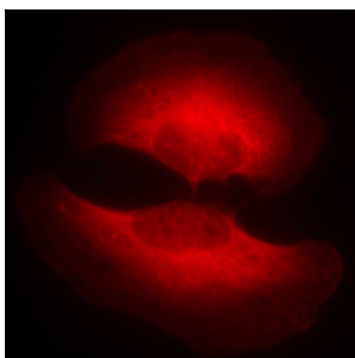


Figure 3: Immunofluorescence staining of methanol-fixed HeLa cells showing cytoplasmic staining using GSK3 β (Phospho-Ser9) Antibody 35-1001.

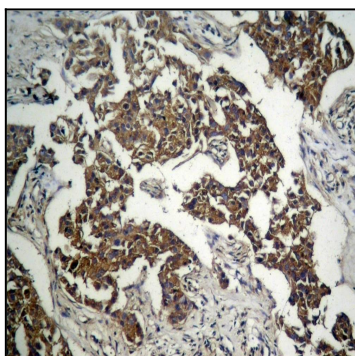


Figure 4: Immunohistochemical analysis of paraffin-embedded human Lung carcinoma tissue using GSK3 β (Phospho-Ser9) Antibody 35-1001.

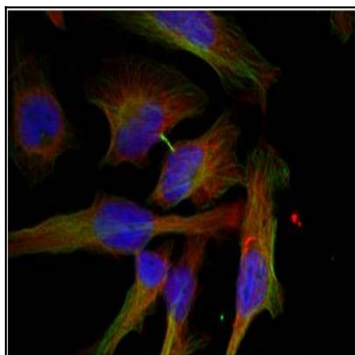


Figure 5 : Immunofluorescence staining of methanol-fixed HeLa cells showing cytoplasmic staining using GSK3 β (Phospho-Ser9) Antibody 35-1001.

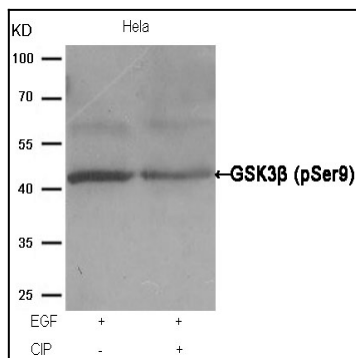


Figure 6 : Western blot analysis of extracts from HeLa cells, treated with EGF or calf intestinal phosphatase (CIP), using GSK3β (Phospho-Ser9) Antibody 35-1001.