

35-1002: Polyclonal Antibody to c-Jun (Phospho-Ser73)

Clonality :	Polyclonal
Application :	WB,IHC
Reactivity :	Rat,Mouse,Human
Gene :	JUN
Gene ID :	3725
Uniprot ID :	P05412
Format :	Purified
Alternative Name :	AH119, AP1, Jun A, c-Jun, p39
Isotype :	Rabbit IgG
Immunogen Information :	Peptide sequence around phosphorylation site of serine 73 (L-A-S(p)-P-E) derived from Human c-Jun.

Description

Transcription factor that recognizes and binds to the enhancer heptamer motif 5'-TGA[CG]TCA-3'.

Product Info

Amount :	50 µl / 100 µl
Content :	Supplied at 1.0mg/mL in phosphate buffered saline (without Mg ²⁺ and Ca ²⁺), pH 7.4, 150mM NaCl, 0.02% sodium azide and 50% glycerol.
Storage condition :	Store the antibody at 4°C, stable for 6 months. For long-term storage, store at -20°C. Avoid repeated freeze and thaw cycles.

Application Note

Predicted MW: 43kd, Western blotting: 1:500~1:1000, Immunohistochemistry: 1:50~1:100

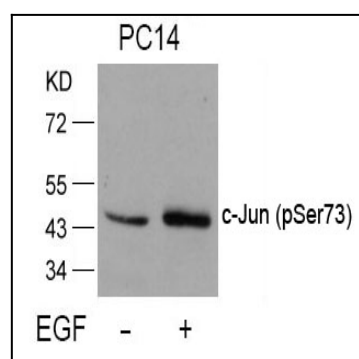


Figure 1: Western blot analysis of extracts from PC14 cells untreated or treated with EGF using c-Jun(Phospho-Ser73) Antibody 35-1002 .

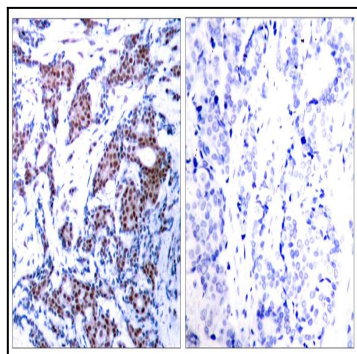


Figure 2: Immunohistochemical analysis of paraffin-embedded human breast carcinoma tissue using c-Jun(Phospho-Ser73) Antibody 35-1002 (left) or the same antibody preincubated with blocking peptide(right).

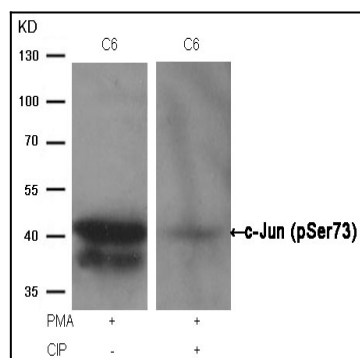


Figure 3: Western blot analysis of extracts from C6 cells, treated with PMA or calf intestinal phosphatase (CIP), using c-Jun (Phospho-Ser73) Antibody 35-1002 .