

### 35-1019: Polyclonal Antibody to Rel (Phospho-Ser503)

<b>Clonality :</b>	Polyclonal
<b>Application :</b>	IF
<b>Reactivity :</b>	Human
<b>Gene :</b>	REL
<b>Gene ID :</b>	5966
<b>Uniprot ID :</b>	Q04864
<b>Format :</b>	Purified
<b>Alternative Name :</b>	C-Rel
<b>Isotype :</b>	Rabbit IgG
<b>Immunogen Information :</b>	Peptide sequence around phosphorylation site of serine 503 (T-S-S(p)-D-S) derived from Human Rel.

#### Description

The REL gene encodes c-Rel, a transcription factor that is a member of the Rel/NF $\kappa$ B family, which also includes RELA (MIM 164014), RELB (604758), NF $\kappa$ B1 (MIM 164011), and NF $\kappa$ B2 (MIM 164012). These proteins are related through a highly conserved N-terminal region termed the 'Rel domain,' which is responsible for DNA binding, dimerization, nuclear localization, and binding to the NF $\kappa$ B inhibitor (MIM 164008).

#### Product Info

<b>Amount :</b>	50 $\mu$ l / 100 $\mu$ l
<b>Content :</b>	Supplied at 1.0mg/mL in phosphate buffered saline (without Mg <sup>2+</sup> and Ca <sup>2+</sup> ), pH 7.4, 150mM NaCl, 0.02% sodium azide and 50% glycerol.
<b>Storage condition :</b>	Store the antibody at 4°C, stable for 6 months. For long-term storage, store at -20°C. Avoid repeated freeze and thaw cycles.

#### Application Note

Predicted MW: 78kd, Immunofluorescence: 1:100~1:200

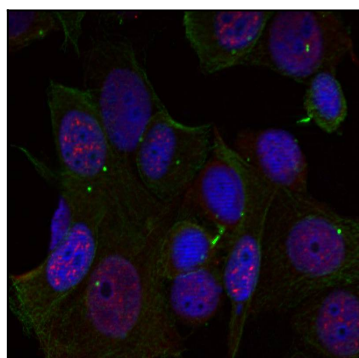


Figure 1: Immunofluorescence staining of methanol-fixed HeLa cells using Rel(Phospho-Ser503) Antibody 35-1019 .