

35-1026: Polyclonal Antibody to JunB (Phospho-Ser259)

| | |
|--------------------------------|--|
| Clonality : | Polyclonal |
| Application : | WB,IHC |
| Reactivity : | Human,Mouse,Rat |
| Gene : | JUNB |
| Gene ID : | 3726 |
| Uniprot ID : | P17275 |
| Format : | Purified |
| Alternative Name : | AP-1 |
| Isotype : | Rabbit IgG |
| Immunogen Information : | Peptide sequence around phosphorylation site of serine 259 (P-V-S(p)-P-I) derived from Human JunB. |

Description

Transcription factor involved in regulating gene activity following the primary growth factor response. Binds to the DNA sequence 5'-TGA[CG]TCA-3'.

Product Info

| | |
|----------------------------|--|
| Amount : | 50 µl / 100 µl |
| Content : | Supplied at 1.0mg/mL in phosphate buffered saline (without Mg ²⁺ and Ca ²⁺), pH 7.4, 150mM NaCl, 0.02% sodium azide and 50% glycerol. |
| Storage condition : | Store the antibody at 4°C, stable for 6 months. For long-term storage, store at -20°C. Avoid repeated freeze and thaw cycles. |

Application Note

Predicted MW: 43kd, Western blotting: 1:500~1:1000, Immunohistochemistry: 1:50~1:100

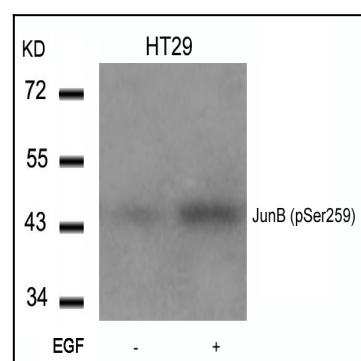


Figure 1: Western blot analysis of extracts from HT29 cells untreated or treated with EGF using JunB(Phospho-Ser259) Antibody 35-1026 .

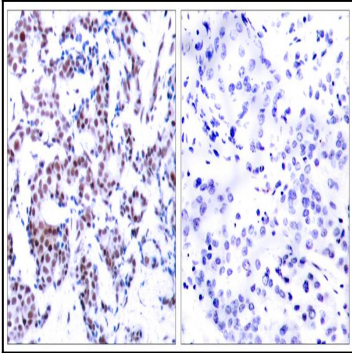


Figure 2: Immunohistochemical analysis of paraffin-embedded human breast carcinoma tissue using JunB(Phospho-Ser259) Antibody 35-1026 (left) or the same antibody preincubated with blocking peptide(right).