

### 35-1028: Polyclonal Antibody to ATF2 (Phospho-Ser62 or 44)

<b>Clonality :</b>	Polyclonal
<b>Application :</b>	WB,IHC
<b>Reactivity :</b>	Human,Mouse,Rat
<b>Gene :</b>	ATF2
<b>Gene ID :</b>	1386
<b>Uniprot ID :</b>	P15336
<b>Format :</b>	Purified
<b>Alternative Name :</b>	CREB2, CREBP1
<b>Isotype :</b>	Rabbit IgG
<b>Immunogen Information :</b>	Peptide sequence around phosphorylation site of serine 62 or 44 (N-D-S(p)-V-I) derived from Human ATF2.

#### Description

Transcriptional activator, probably constitutive, which binds to the cAMP-responsive element (CRE) (consensus: 5'-GTGACGT[AC][AG]-3'), a sequence present in many viral and cellular promoters. Interaction with JUN redirects JUN to bind to CRES preferentially over the 12-O-tetradecanoylphorbol-13-acetate response elements (TRES) as part of an ATF2-c-Jun complex.

#### Product Info

<b>Amount :</b>	50 µl / 100 µl
<b>Content :</b>	Supplied at 1.0mg/mL in phosphate buffered saline (without Mg <sup>2+</sup> and Ca <sup>2+</sup> ), pH 7.4, 150mM NaCl, 0.02% sodium azide and 50% glycerol.
<b>Storage condition :</b>	Store the antibody at 4°C, stable for 6 months. For long-term storage, store at -20°C. Avoid repeated freeze and thaw cycles.

#### Application Note

Predicted MW: 65-75 kd, Western blotting: 1:500~1:1000, Immunohistochemistry: 1:50~1:100

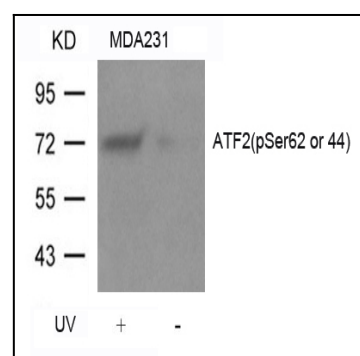


Figure 1: Western blot analysis of extracts from MDA231 cells untreated or treated with UV using ATF2(Phospho-Ser62 or 44) Antibody 35-1028 .

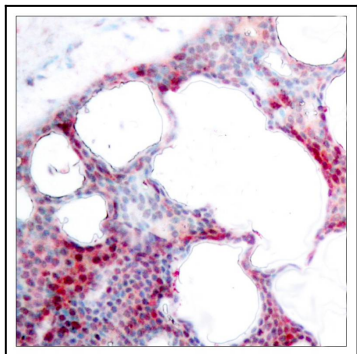


Figure 2: Immunohistochemical analysis of paraffin-embedded human breast carcinoma tissue using ATF2(Phospho-Ser62 or 44) Antibody 35-1028 .