

35-1031: Polyclonal Antibody to ATF2 (Phospho-Thr73 or 55)

Clonality :	Polyclonal
Application :	WB,IHC,IF
Reactivity :	Human,Mouse,Rat,Mk
Gene :	ATF2
Gene ID :	1386
Uniprot ID :	P15336
Format :	Purified
Alternative Name :	CREB2, CREBP1
Isotype :	Rabbit IgG
Immunogen Information :	Peptide sequence around phosphorylation site of threonine 73 or 55 (T-P-T(p)-R-F) derived from Human ATF2.

Description

Transcriptional activator, probably constitutive, which binds to the cAMP-responsive element (CRE) (consensus: 5'-GTGACGT[AC][AG]-3'), a sequence present in many viral and cellular promoters. Interaction with JUN redirects JUN to bind to CRES preferentially over the 12-O-tetradecanoylphorbol-13-acetate response elements (TRES) as part of an ATF2-c-Jun complex. Beausoleil S A, et al. (2004) Proc Natl Acad Sci U S A. 101(33): 12130-12135. Abdel-Hafiz H A, et al. (1992) Mol Endocrinol. 6: 2079-2089. Gupta S, et al. (1995) Science. 267: 389-393. Van Dam H, et al. (1995) EMBO J. 14(8): 1798-1811. Livingstone C, et al. (1995) EMBO J. 14: 1785-1797.

Product Info

Amount :	50 µl / 100 µl
Content :	Supplied at 1.0mg/mL in phosphate buffered saline (without Mg ²⁺ and Ca ²⁺), pH 7.4, 150mM NaCl, 0.02% sodium azide and 50% glycerol.
Storage condition :	Store the antibody at 4°C, stable for 6 months. For long-term storage, store at -20°C. Avoid repeated freeze and thaw cycles.

Application Note

Predicted MW: 65-75 kd, Western blotting: 1:500~1:1000, Immunohistochemistry: 1:50~1:100, Immunofluorescence: 1:100~1:200

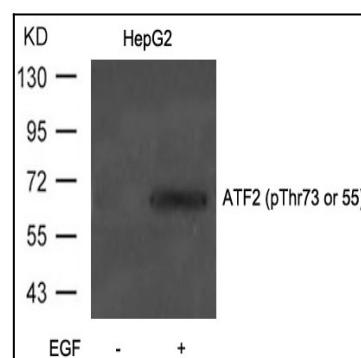


Figure 1: Western blot analysis of extracts from HepG2 cells untreated or treated with EGF using ATF2(Phospho-Thr71 or 53) Antibody 35-1031 .

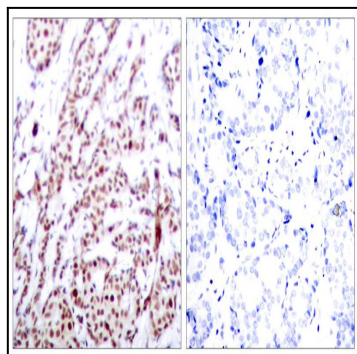


Figure 2: Immunohistochemical analysis of paraffin-embedded human breast carcinoma tissue using ATF2(Phospho-Thr73 or 55) Antibody 35-1031 (left) or the same antibody preincubated with blocking peptide(right).

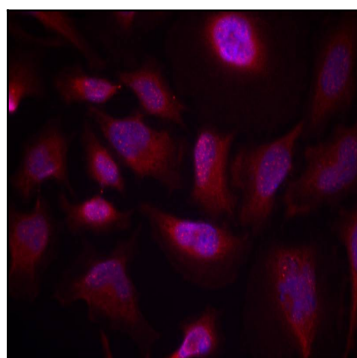


Figure 3: Immunofluorescence staining of methanol-fixed HeLa cells using ATF2(Phospho-Thr73 or 55) Antibody 35-1031 .

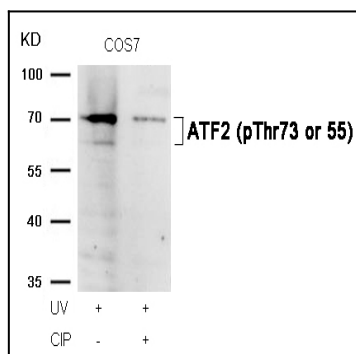


Figure 4: Western blot analysis of extracts from COS7 cells, treated with UV or calf intestinal phosphatase (CIP), using ATF2 (Phospho-Thr73 or 55) Antibody 35-1031 .