

35-1063: Polyclonal Antibody to BCL-2(Phospho-Ser70)

Clonality :	Polyclonal
Application :	IHC
Reactivity :	Human
Gene :	BCL2
Gene ID :	596
Uniprot ID :	P10415
Format :	Purified
Alternative Name :	Bcl-2, PPP1R50
Isotype :	Rabbit IgG
Immunogen Information :	Peptide sequence around phosphorylation site of serine 70(R-T-S(p)-P-L) derived from Human BCL-2.

Description

Suppresses apoptosis in a variety of cell systems including factor-dependent lymphohematopoietic and neural cells. Regulates cell death by controlling the mitochondrial membrane permeability. Appears to function in a feedback loop system with caspases. Inhibits caspase activity either by preventing the release of cytochrome c from the mitochondria and/or by binding to the apoptosis-activating factor (APAF-1).

Product Info

Amount :	50 µl / 100 µl
Content :	Supplied at 1.0mg/mL in phosphate buffered saline (without Mg ²⁺ and Ca ²⁺), pH 7.4, 150mM NaCl, 0.02% sodium azide and 50% glycerol.
Storage condition :	Store the antibody at 4°C, stable for 6 months. For long-term storage, store at -20°C. Avoid repeated freeze and thaw cycles.

Application Note

Predicted MW: 26kd, Immunohistochemistry: 1:50~1:100

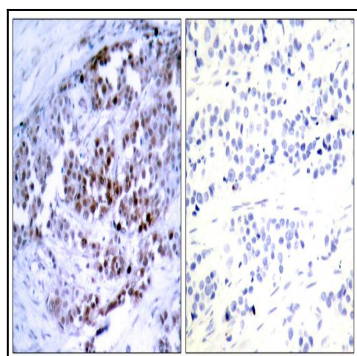


Figure 1: Immunohistochemical analysis of paraffin-embedded human breast carcinoma, using BCL-2 (phospho-Ser70) antibody (35-1063).