

## 35-1077: Polyclonal Antibody to HER2 (Phospho-Tyr1248)

<b>Clonality :</b>	Polyclonal
<b>Application :</b>	WB,IHC,IF
<b>Reactivity :</b>	Human,Mouse,Rat
<b>Gene :</b>	ERBB2
<b>Gene ID :</b>	2064
<b>Uniprot ID :</b>	P04626
<b>Format :</b>	Purified
<b>Alternative Name :</b>	C-erbB-2, ErbB2
<b>Isotype :</b>	Rabbit IgG
<b>Immunogen Information :</b>	Peptide sequence around phosphorylation site of tyrosine1248 (P-E-Y(p)-L-G) derived from Human HER2.

### Description

Essential component of a neuregulin-receptor complex, although neuregulins do not interact with it alone. GP30 is a potential ligand for this receptor. Not activated by EGF, TGF- $\alpha$  and amphiregulin. Yuan,Lu Qian ,Ming Shi, et al. (2008) HER2-dependent MMP-7 expression is mediated by activated STAT3 Guogang Cellular Signalling, 20:1284

### Product Info

<b>Amount :</b>	50 $\mu$ l / 100 $\mu$ l
<b>Content :</b>	Supplied at 1.0mg/mL in phosphate buffered saline (without Mg <sup>2+</sup> and Ca <sup>2+</sup> ), pH 7.4, 150mM NaCl, 0.02% sodium azide and 50% glycerol.
<b>Storage condition :</b>	Store the antibody at 4°C, stable for 6 months. For long-term storage, store at -20°C. Avoid repeated freeze and thaw cycles.

### Application Note

Predicted MW: 185kd, Western blotting: 1:500~1:1000, Immunohistochemistry: 1:50~1:100, Immunofluorescence: 1:100~1:200

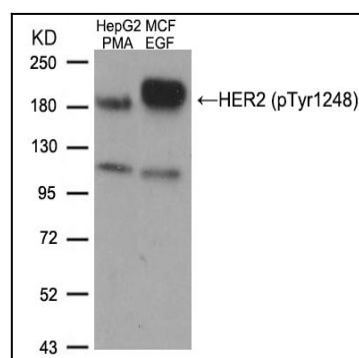


Figure 1: Western blot analysis of extracts from HepG2 cells treated with PMA and MCF cells treated with EGF, using HER2 (Phospho-Tyr1248) Antibody 35-1077 .

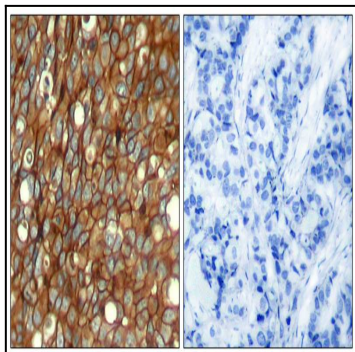


Figure 2: Immunohistochemical analysis of paraffin-embedded human breast carcinoma tissue using HER2 (Phospho-Tyr1248) Antibody 35-1077 (left) or the same antibody preincubated with blocking peptide 51079 (right).

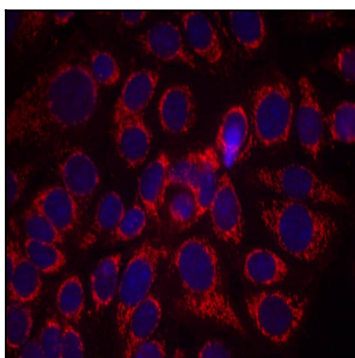


Figure 3: Immunofluorescence staining of methanol-fixed MCF7 cells using HER2(Phospho-Tyr1248) Antibody 35-1077 .

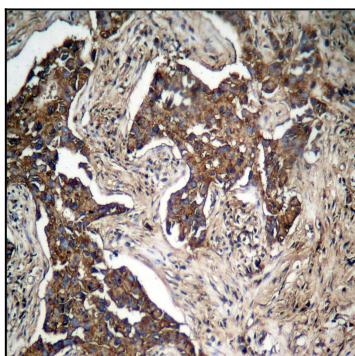


Figure 4: Immunohistochemical analysis of paraffin-embedded human lung carcinoma tissue, using HER2 (Phospho-Tyr1248) Antibody 35-1077 .