

35-1086: Polyclonal Antibody to IGF-1R (Phospho-Tyr1165/Tyr1166)

Clonality :	Polyclonal
Application :	WB,IF
Reactivity :	Human,Mouse,Rat
Gene :	IGF1R
Gene ID :	3480
Uniprot ID :	P08069
Format :	Purified
Alternative Name :	Insulin-like growth factor I receptor, CD221, IGF1R, kinase IGF1R
Isotype :	Rabbit IgG
Immunogen Information :	Peptide sequence around phosphorylation site of tyrosine 1165/tyrosine 1166 (T-D-Y(p)-Y(p)-R-K) derived from Human IGF-1R .

Description

This receptor binds insulin-like growth factor 1 (IGF1) with a high affinity and IGF2 with a lower affinity. It has a tyrosine-protein kinase activity, which is necessary for the activation of the IGF1-stimulated downstream signaling cascade. When present in a hybrid receptor with INSR, binds IGF1.

Product Info

Amount :	50 µl / 100 µl
Content :	Supplied at 1.0mg/mL in phosphate buffered saline (without Mg ²⁺ and Ca ²⁺), pH 7.4, 150mM NaCl, 0.02% sodium azide and 50% glycerol.
Storage condition :	Store the antibody at 4°C, stable for 6 months. For long-term storage, store at -20°C. Avoid repeated freeze and thaw cycles.

Application Note

Predicted MW: 200 95 kd, Western blotting: 1:500~1:1000, Immunofluorescence: 1:100~1:200

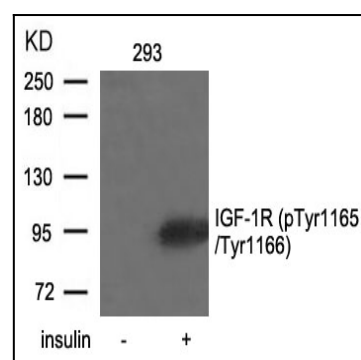


Figure 1: Western blot analysis of extracts from 293 cells untreated or treated with insulin using IGF-1R(Phospho-Tyr1165/Tyr1166) Antibody 35-1086 .

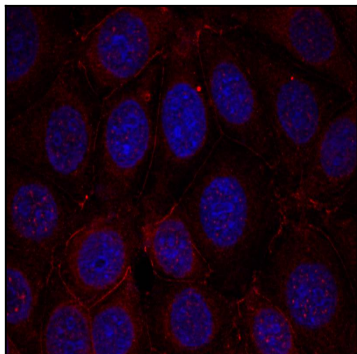


Figure 2: Immunofluorescence staining of methanol-fixed MCF cells using IGF-1R(Phospho-Tyr1165/Tyr1166) Antibody 35-1086 .