

35-1111: Polyclonal Antibody to Myosin Light Chain 2 (Phospho-Ser19)

Clonality :	Polyclonal
Application :	WB,IHC
Reactivity :	Human,Mouse,Rat
Gene :	MYL9
Gene ID :	10398
Uniprot ID :	P24844
Format :	Purified
Alternative Name :	MLC-2a, MLC2a, MLRA, MYL7, MYLC2A
Isotype :	Rabbit IgG
Immunogen Information :	Peptide sequence around phosphorylation site of serine 19 (A-T-S(p)-N-V) derived from Human Myosin Light Chain 2.

Description

Myosin regulatory subunit that plays an important role in regulation of both smooth muscle and nonmuscle cell contractile activity via its phosphorylation. Implicated in cytokinesis, receptor capping, and cell locomotion Janiak A, et al. (2006) Mol Biol Cell. Apr; 17(4): 1606-1619. Croft DR, et al. (2006) Mol Cell Biol. 2 Jun; 26(12): 4612-4627 Li Z, et al. (2006) Mol Cell Biol. Jun; 26(11): 4240-4256

Product Info

Amount :	50 µl / 100 µl
Content :	Supplied at 1.0mg/mL in phosphate buffered saline (without Mg ²⁺ and Ca ²⁺), pH 7.4, 150mM NaCl, 0.02% sodium azide and 50% glycerol.
Storage condition :	Store the antibody at 4°C, stable for 6 months. For long-term storage, store at -20°C. Avoid repeated freeze and thaw cycles.

Application Note

Predicted MW: 18kd, Western blotting: 1:500~1:1000, Immunohistochemistry: 1:50~1:100

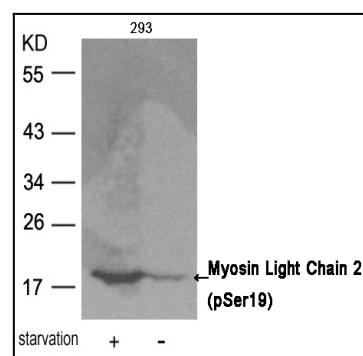


Figure 1: Western blot analysis of extracts from 293 cells untreated or treated with starvation using Myosin Light Chain 2 (Phospho-Ser19) Antibody 35-1111 .

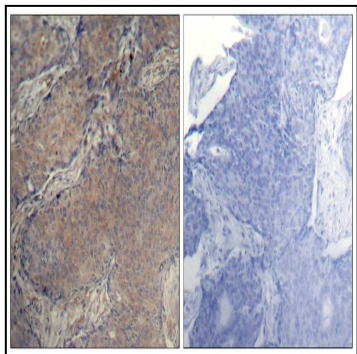


Figure 2: Immunohistochemical analysis of paraffin-embedded human breast carcinoma tissue using Myosin Light Chain 2 (Phospho-Ser19) Antibody 35-1111 (left) or the same antibody preincubated with blocking peptide (right).