

35-1115: Polyclonal Antibody to cdc25C (Phospho-Ser216)

Clonality :	Polyclonal
Application :	WB,IHC,IF
Reactivity :	Human
Gene :	CDC25C
Gene ID :	995
Uniprot ID :	P30307
Format :	Purified
Alternative Name :	CDC25M1, MIP13, Dual specificity phosphatase Cdc25C
Isotype :	Rabbit IgG
Immunogen Information :	Peptide sequence around phosphorylation site of serine 216 (S-P-S(p)-M-P) derived from Human cdc25C.

Description

cdc25C is highly conserved during evolution and it plays a key role in the regulation of cell division. The encoded protein is a tyrosine phosphatase and belongs to the Cdc25 phosphatase family. It directs dephosphorylation of cyclin B-bound CDC2 and triggers entry into mitosis. It is also thought to suppress p53-induced growth arrest. Multiple alternatively spliced transcript variants of this gene have been described, however, the full-length nature of many of them is not known.

Product Info

Amount :	50 µl / 100 µl
Content :	Supplied at 1.0mg/mL in phosphate buffered saline (without Mg ²⁺ and Ca ²⁺), pH 7.4, 150mM NaCl, 0.02% sodium azide and 50% glycerol.
Storage condition :	Store the antibody at 4°C, stable for 6 months. For long-term storage, store at -20°C. Avoid repeated freeze and thaw cycles.

Application Note

Predicted MW: 60 80kd, Western blotting: 1:500~1:1000, Immunohistochemistry: 1:50~1:100, Immunofluorescence: 1:100~1:200

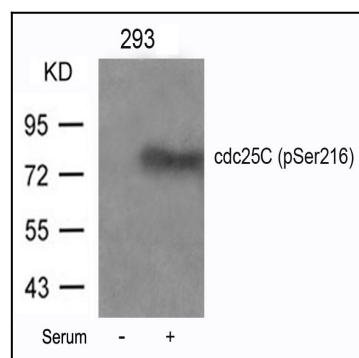


Figure 1: Western blot analysis of extracts from 293 cells untreated or treated with serum using cdc25C(Phospho-Ser216) Antibody 35-1115 .

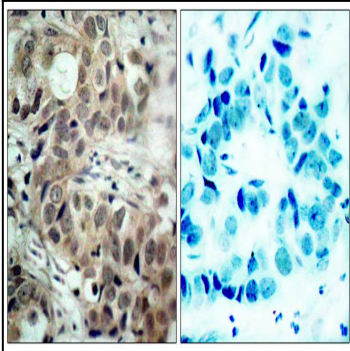


Figure 2: Immunohistochemical analysis of paraffin-embedded human breast carcinoma tissue using cdc25C(Phospho-Ser216) Antibody 35-1115 (left) or the same antibody preincubated with blocking peptide(right).

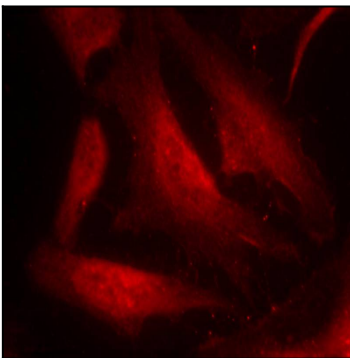


Figure 3: Immunofluorescence staining of methanol-fixed HeLa cells using cdc25C(Phospho-Ser216) Antibody 35-1115 .