

## 35-1116: Polyclonal Antibody to Androgen Receptor (Phospho-Ser213)

<b>Clonality :</b>	Polyclonal
<b>Application :</b>	WB,IF
<b>Reactivity :</b>	Human
<b>Gene :</b>	AR
<b>Gene ID :</b>	367
<b>Uniprot ID :</b>	P10275
<b>Format :</b>	Purified
<b>Alternative Name :</b>	ANDR, DHTR, AR
<b>Isotype :</b>	Rabbit IgG
<b>Immunogen Information :</b>	Peptide sequence around phosphorylation site of serine 213 (E-A-S(p)-G-A) derived from Human Androgen Receptor.

### Description

The androgen receptor gene is more than 90 kb long and codes for a protein that has 3 major functional domains: the N-terminal domain, DNA-binding domain, and androgen-binding domain. The protein functions as a steroid-hormone activated transcription factor. Upon binding the hormone ligand, the receptor dissociates from accessory proteins, translocates into the nucleus, dimerizes, and then stimulates transcription of androgen responsive genes. This gene contains 2 polymorphic trinucleotide repeat segments that encode polyglutamine and polyglycine tracts in the N-terminal transactivation domain of its protein. Expansion of the polyglutamine tract causes spinal bulbar muscular atrophy (Kennedy disease). Mutations in this gene are also associated with complete androgen insensitivity (CAIS). Two alternatively spliced variants encoding distinct isoforms have been described.

### Product Info

<b>Amount :</b>	50 µl / 100 µl
<b>Content :</b>	Supplied at 1.0mg/mL in phosphate buffered saline (without Mg <sup>2+</sup> and Ca <sup>2+</sup> ), pH 7.4, 150mM NaCl, 0.02% sodium azide and 50% glycerol.
<b>Storage condition :</b>	Store the antibody at 4°C, stable for 6 months. For long-term storage, store at -20°C. Avoid repeated freeze and thaw cycles.

### Application Note

Predicted MW: 110kd, Western blotting: 1:500~1:1000, Immunofluorescence: 1:100~1:200

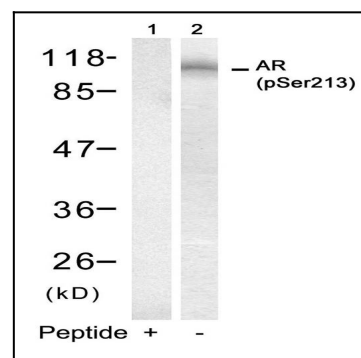


Figure 1: Western blot analysis of extracts from DU145 cells using Androgen Receptor(Phospho-Ser213) Antibody 35-1116 (Lane 2) and the same antibody preincubated with blocking peptide(Lane1).

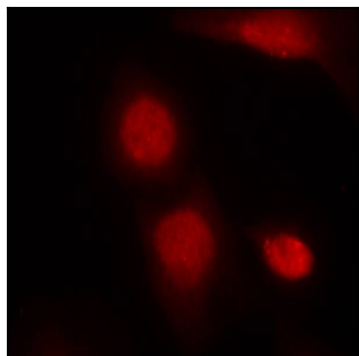


Figure 2: Immunofluorescence staining of methanol-fixed HeLa cells using Androgen Receptor(Phospho-Ser213) Antibody 35-1116 .