

## 35-1123: Polyclonal Antibody to LIMK2 (Phospho-Thr505)

<b>Clonality :</b>	Polyclonal
<b>Application :</b>	WB,IHC,IF
<b>Reactivity :</b>	Human,Mouse,Rat
<b>Gene :</b>	LIMK2
<b>Gene ID :</b>	3985
<b>Uniprot ID :</b>	P53671
<b>Format :</b>	Purified
<b>Alternative Name :</b>	LIMK-2, kinase LIMK2
<b>Isotype :</b>	Rabbit IgG
<b>Immunogen Information :</b>	Peptide sequence around phosphorylation site of threonine 505 (R-Y-T(p)-V-V) derived from Human LIMK2.

### Description

Displays serine/threonine-specific phosphorylation of myelin basic protein and histone (MBP) in vitro.

### Product Info

<b>Amount :</b>	50 µl / 100 µl
<b>Content :</b>	Supplied at 1.0mg/mL in phosphate buffered saline (without Mg <sup>2+</sup> and Ca <sup>2+</sup> ), pH 7.4, 150mM NaCl, 0.02% sodium azide and 50% glycerol.
<b>Storage condition :</b>	Store the antibody at 4°C, stable for 6 months. For long-term storage, store at -20°C. Avoid repeated freeze and thaw cycles.

### Application Note

Predicted MW: 70kd, Western blotting: 1:500~1:1000, Immunohistochemistry: 1:50~1:100, Immunofluorescence: 1:100~1:200

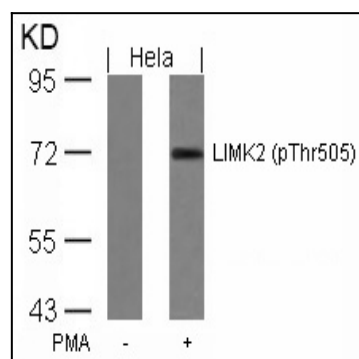


Figure 1: Western blot analysis of extracts from HeLa cells untreated or treated with PMA using LIMK2(Phospho-Thr505) Antibody 35-1123 .

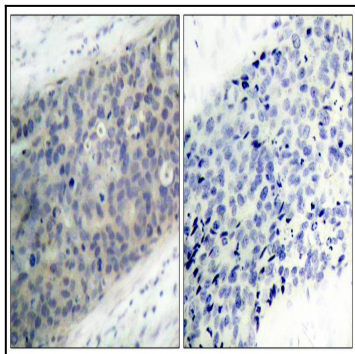


Figure 2: Immunohistochemical analysis of paraffin-embedded human breast carcinoma tissue using LIMK2(Phospho-Thr505) Antibody 35-1123 (left) or the same antibody preincubated with blocking peptide(right).

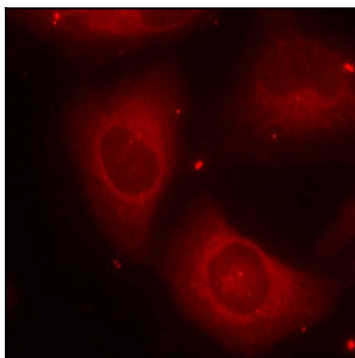


Figure 3: Immunofluorescence staining of methanol-fixed HeLa cells using LIMK2(Phospho-Thr505) Antibody 35-1123 .