

## 35-1132: Polyclonal Antibody to AFX (Phospho-Ser197)

<b>Clonality :</b>	Polyclonal
<b>Application :</b>	WB,IHC,IF
<b>Reactivity :</b>	Human,Mouse,Rat
<b>Gene :</b>	FOXO4
<b>Gene ID :</b>	4303
<b>Uniprot ID :</b>	P98177
<b>Format :</b>	Purified
<b>Alternative Name :</b>	AFX, FOXO4, AFX1, Afxh
<b>Isotype :</b>	Rabbit IgG
<b>Immunogen Information :</b>	Peptide sequence around phosphorylation site of serine 197 (A-A-S(p)-M-D) derived from Human AFX.

### Description

Transcription factor involved in the regulation of the insulin signaling pathway. Binds to insulin-response elements (IREs) and can activate transcription of IGFBP1. Down-regulates expression of HIF1A and suppresses hypoxia-induced transcriptional activation of HIF1A-modulated genes. Also involved in negative regulation of the cell cycle.

### Product Info

<b>Amount :</b>	50 µl / 100 µl
<b>Content :</b>	Supplied at 1.0mg/mL in phosphate buffered saline (without Mg <sup>2+</sup> and Ca <sup>2+</sup> ), pH 7.4, 150mM NaCl, 0.02% sodium azide and 50% glycerol.
<b>Storage condition :</b>	Store the antibody at 4°C, stable for 6 months. For long-term storage, store at -20°C. Avoid repeated freeze and thaw cycles.

### Application Note

Predicted MW: 65kd, Western blotting: 1:500~1:1000, Immunohistochemistry: 1:50~1:100, Immunofluorescence: 1:100~1:200

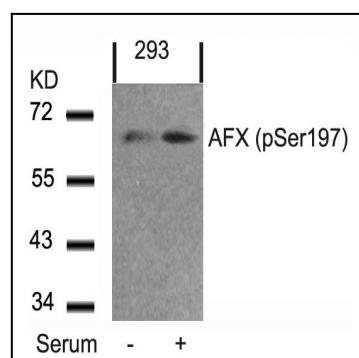


Figure 1: Western blot analysis of extracts from 293 cells untreated or treated with serum using AFX(Phospho-Ser197) Antibody 35-1132 .

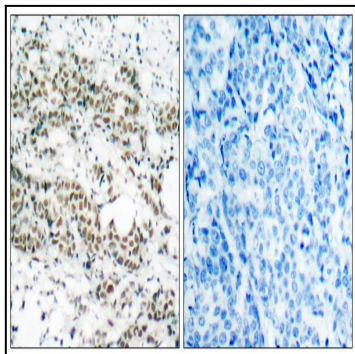


Figure 2: Immunohistochemical analysis of paraffin-embedded human breast carcinoma tissue using AFX(Phospho-Ser197) Antibody 35-1132 (left) or the same antibody preincubated with blocking peptide(right).

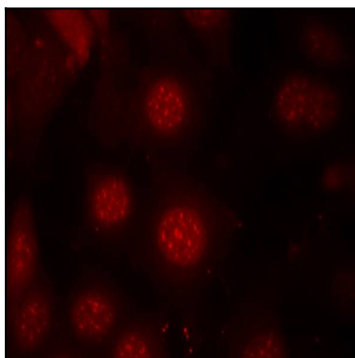


Figure 3: Immunofluorescence staining of methanol-fixed MCF7 cells using AFX(Phospho-Ser197) Antibody 35-1132 .