

35-1133: Polyclonal Antibody to cdc25A (Phospho-Ser76)

Clonality :	Polyclonal
Application :	WB,IHC
Reactivity :	Human,Mouse,Rat
Gene :	CDC25A
Gene ID :	993
Uniprot ID :	P30304
Format :	Purified
Alternative Name :	CDC25M3, MPIP1, Dual specificity phosphatase Cdc25A
Isotype :	Rabbit IgG
Immunogen Information :	Peptide sequence around phosphorylation site of serine 76 (M-G-S(p)-S-E) derived from Human cdc25A.

Description

Tyrosine protein phosphatase which functions as a dosage-dependent inducer of mitotic progression. Directly dephosphorylates CDC2 and stimulates its kinase activity. Also dephosphorylates CDK2 in complex with cyclin E, in vitro.

Product Info

Amount :	50 µl / 100 µl
Content :	Supplied at 1.0mg/mL in phosphate buffered saline (without Mg ²⁺ and Ca ²⁺), pH 7.4, 150mM NaCl, 0.02% sodium azide and 50% glycerol.
Storage condition :	Store the antibody at 4°C, stable for 6 months. For long-term storage, store at -20°C. Avoid repeated freeze and thaw cycles.

Application Note

Predicted MW: 70kd, Western blotting: 1:500~1:1000, Immunohistochemistry: 1:50~1:100

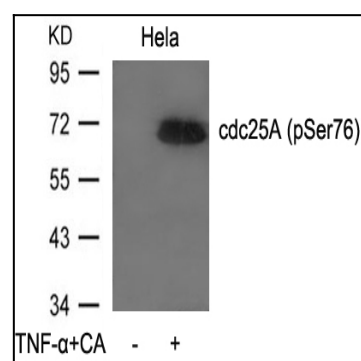


Figure 1: Western blot analysis of extracts from HeLa cells untreated or treated with TNF-α and CA using cdc25A(Phospho-Ser76) Antibody 35-1133 .

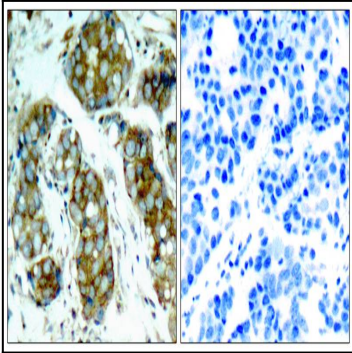


Figure 2: Immunohistochemical analysis of paraffin-embedded human breast carcinoma tissue using cdc25A(Phospho-Ser76) Antibody 35-1133 (left) or the same antibody preincubated with blocking peptide(right).