

35-1137: Polyclonal Antibody to IRS-1(Phospho-Ser312)

Clonality :	Polyclonal
Application :	WB
Reactivity :	Rat,Mouse,Human
Gene :	IRS1
Gene ID :	3667
Uniprot ID :	P35568
Format :	Purified
Alternative Name :	HIRS-1, IRS1, Insulin receptor substrate 1
Isotype :	Rabbit IgG
Immunogen Information :	Peptide sequence around phosphorylation site of serine 312 (A-T-S(p)-P-A) derived from Human IRS-1.

Description

May mediate the control of various cellular processes by insulin. When phosphorylated by the insulin receptor binds specifically to various cellular proteins containing SH2 domains such as phosphatidylinositol 3-kinase p85 subunit or GRB2. Activates phosphatidylinositol 3-kinase when bound to the regulatory p85 subunit

Product Info

Amount :	50 µl / 100 µl
Content :	Supplied at 1.0mg/mL in phosphate buffered saline (without Mg ²⁺ and Ca ²⁺), pH 7.4, 150mM NaCl, 0.02% sodium azide and 50% glycerol.
Storage condition :	Store the antibody at 4°C, stable for 6 months. For long-term storage, store at -20°C. Avoid repeated freeze and thaw cycles.

Application Note

Predicted MW: 180kd, Western blotting: 1:500~1:1000

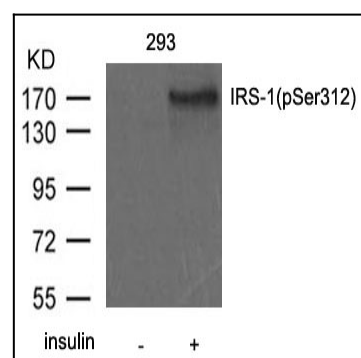


Figure 1: Western blot analysis of extract from 293 cells untreated or treated with insulin using IRS-1(Phospho-Ser312) Antibody 35-1137 .