

35-1143: Polyclonal Antibody to JAK1 (Phospho-Tyr1022)

Clonality :	Polyclonal
Application :	WB,IHC
Reactivity :	Human,Mouse,Rat
Gene :	JAK1
Gene ID :	3716
Uniprot ID :	P23458
Format :	Purified
Alternative Name :	Janus kinase 1
Isotype :	Rabbit IgG
Immunogen Information :	Peptide sequence around phosphorylation site of tyrosine 1022 (K-E-Y(p)-Y-T) derived from Human JAK1.

Description

Tyrosine kinase of the non-receptor type, involved in the IFN- α /beta/gamma signal pathway. Kinase partner for the interleukin (IL)-2 receptor.

Product Info

Amount :	50 μ l / 100 μ l
Content :	Supplied at 1.0mg/mL in phosphate buffered saline (without Mg ²⁺ and Ca ²⁺), pH 7.4, 150mM NaCl, 0.02% sodium azide and 50% glycerol.
Storage condition :	Store the antibody at 4°C, stable for 6 months. For long-term storage, store at -20°C. Avoid repeated freeze and thaw cycles.

Application Note

Predicted MW: 130kd, Western blotting: 1:500~1:1000, Immunohistochemistry: 1:50~1:100

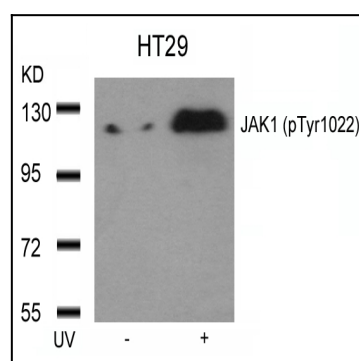


Figure 1: Western blot analysis of extracts from HT29 cells untreated or treated with UV using JAK1(Phospho-Tyr1022) Antibody 35-1143 .

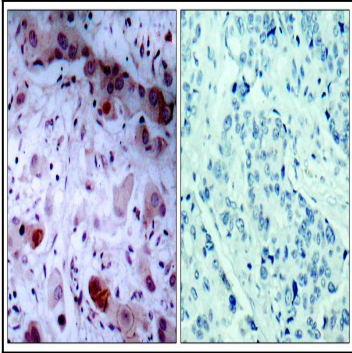


Figure 2: Immunohistochemical analysis of paraffin-embedded human breast carcinoma tissue using JAK1(Phospho-Tyr1022) Antibody 35-1143 (left) or the same antibody preincubated with blocking peptide(right).